



ASPIRVELO AIR

ECOCOMFORT 2.0 SMART Series

PRECISE FAN UNIT WITH HEAT RECOVERY.
EQUIPPED WITH ARTIFICIAL INTELLIGENCE AND SMART FUNCTIONS.
USE AND INSTALLATION MANUAL

Table of contents

1. General information	5
1.1. Key concepts	5
1.1.1. Master and slave	6
1.1.2. Warnings	7
1.1.3. Regulations	7
2. Installation	8
2.1. Contents of package	8
2.1.1. Dimensional data	8
2.2. Type of installation	9
2.2.1. Wall bore	9
2.2.2. Installation of several devices	9
2.2.3. Electronic unit fixing holes	10
2.3. Connection diagram	14
2.4. Technical data	14
2.4.1. Accessories and spare parts	14
3. Use of the device	15
3.1. Introduction	15
3.2. Creating an account	16
3.3. Pairing the device with the App	17
3.4. Changing interface language	22
3.5. Password forgotten	23
3.6. Home page	24
3.7. Functions with Intelliclima plus App	25
3.7.1. Automatic mode	25
3.7.2. Manual mode	25
3.7.3. Sleep mode	27
3.7.4. Off mode	28
4. Settings	29
4.1. App General Settings	30
4.1.1. Adding home	31
4.1.2. Add Vmc	31
4.1.3. Editing an account	32
4.1.4. Push notifications	33
4.1.5. Language	33
4.1.6. Information	34
4.1.7. Account Cancellation	34
4.2. Home Settings	35
4.3. Device settings	36
4.3.1. Programs	37
4.3.1.1. Moving a daily profile to another program	38
4.3.1.2. Creating a new program	39
4.3.1.3. Creating/editing a daily profile	40
4.3.1.4. Duplicating a program	42
4.3.1.5. Removing a program	42
4.3.1.6. Sending a program to the device	43
4.3.2. Reports	44
4.3.3. Advanced settings	45
4.3.3.1. Geolocation	46
4.3.3.2. Perceived temperature	49
4.3.3.3. Filter management	49
4.3.3.4. Season	50
4.3.3.5. Free cooling	51
4.3.3.6. Day and time	51
4.3.3.7. Offset configuration	52

4.3.3.8. Sensor thresholds	53
4.3.5. Room name	54
4.3.6. Wallpaper	55
4.3.7. Moving Ecomfort 2.0 Smart	56
4.3.8. Sharing	57
4.3.8.1. Inviting another user	57
4.3.8.2. Transferring ownership	58
4.3.8.3. Removing user from management	59
4.3.9. Wi-Fi setting	60
4.3.10. Managing Ecomfort 2.0 Smart (updating firmware)	61
4.3.11. Online Manual	62
4.3.12. Removing device	62

1. General information

1.1. Key concepts

The "ECOCOMFORT 2.0 SMART" system consists of:

- one or several decentralised, high-efficiency heat recovery fan units to be installed on perimeter walls;
- each unit consists of a ceramic regenerative heat exchanger located in the units which accumulates the heat released by the air flow extracted from the room and returns it by heating the air during the supply cycle.
The air released into the room passes through an ISO Coarse filter which traps any impurities.

Each fan unit is equipped with a low consumption brushless DC motor controlled by a microprocessor which, by processing the sensor information on the unit (temperature, humidity, brightness and VOC) and the prompts given through the Intelliclima+ App, adopts the most suitable fan modes to ensure air quality and the best comfort for the user.

The minimum installable configuration is the "main" (master) controller, to which several "satellite" (slave) units can be added.

The ECOCOMFORT 2.0 SMART multi connectivity system integrates with the Intelliclima+ App, which is used to configure and manage not only the different operating modes of the fan system, but also Fantini Cosmi smart programmable thermostats from an "integrated" smart home perspective.

Dynamic shared geolocation

By leveraging artificial intelligence, different speeds can be set based on your position with respect to the device.

When the function is enabled, based on the settings made, the system will record when your family members and you leave and approach home, and will adjust the operation of the device to the real presence of people.

See [Geolocation](#)

Remote control from App

the device can be configured and managed from smartphones and tablets through the Intelliclima+ APP.

the multi-connectivity system can be used to control the fan unit both locally via Bluetooth and remotely

via Wi-Fi [2,4 GHz (802.11 b/g/n)].

See [Use of the device](#)



Sensor reports view

It shows you the consumption trend of your system and the parameters read by the sensors on the device: room temperature, Room humidity and Air quality and speed used.

See [Reports](#)

Perceived temperature

Displays the environmental comfort by evaluating the actual heat sensation perceived by you and considering the actual humidity and temperature parameters.

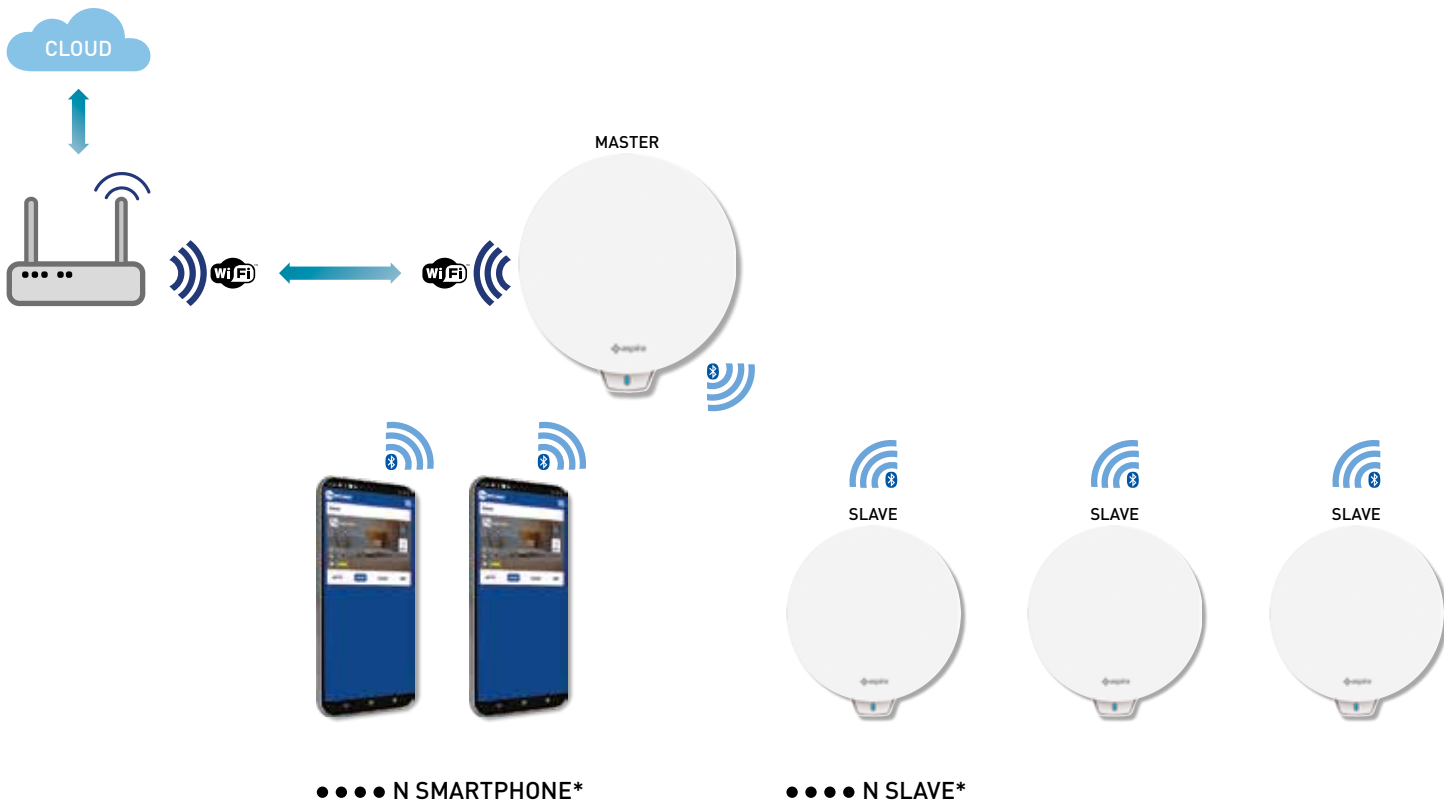
See [Perceived temperature](#)

Auto Smart Sensor

Auto-adjusts the supply/exhaust cycle time according to the Ext/Int air temperatures. Furthermore, based on the RH% and VOC sensors, it modulates the set speeds to improve air quality in the rooms.

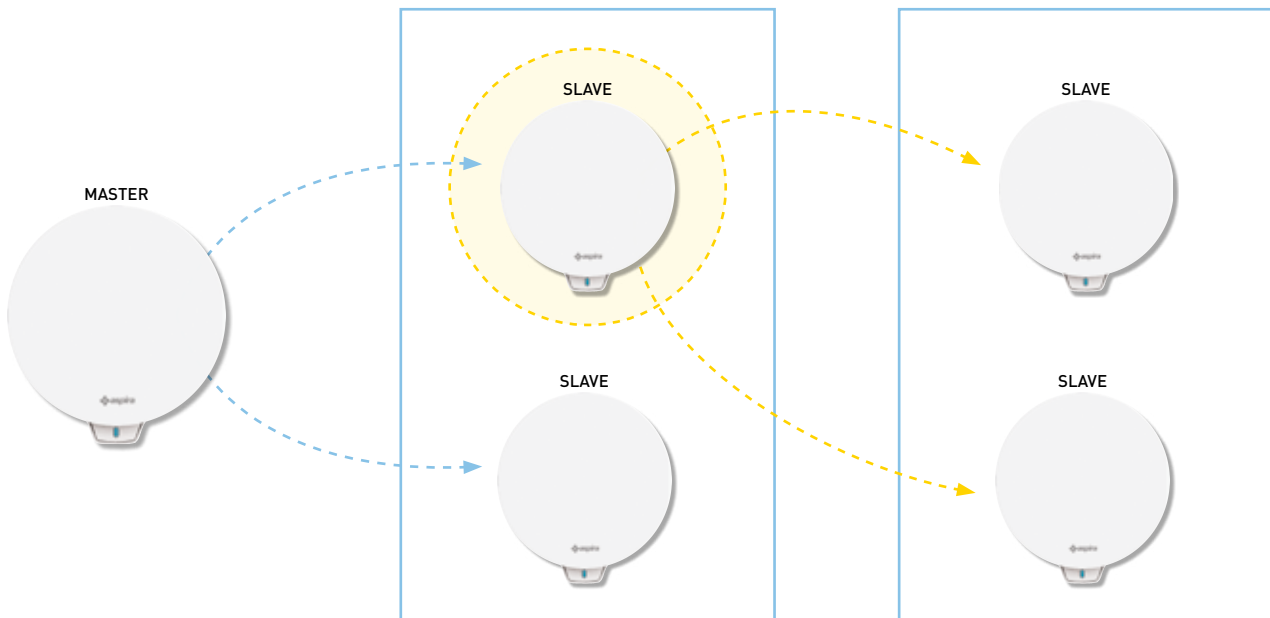
Back

1.1.1. Master and slave



N SLAVE 1st LEVEL

N SLAVE 2nd LEVEL



The Ecocomfort 2.0 Smart system may consist of a Master and several Slave units communicating with each other via Bluetooth Low Energy. The system can be configured keeping the maximum distances required by the Bluetooth between one device and another (about 10m in an open environment). The Slave units out of range from the Master can be configured with direct communication on another Slave unit.

* Each Ecocomfort 2.0 Smart can be paired with up to 10 devices including smartphones.

When installing a device, specify whether it is a Master or a Slave unit. If it is a Master, follow the APP instructions; if, on the other hand, it is a Slave unit, specify on which device the rotation direction (concordant/discordant) with respect to the Master controller directly depends for communication.

1.1.2. Warnings

Carefully read the installation instructions, the safety warnings, and the use and maintenance instructions in this manual, which must be stored

with care for any future consultation.

- The unit should only be installed by qualified technicians, in compliance with current standards and interposing an all-pole switch with contact opening distance equal to or greater than 3 mm.
- The unit is intended to ventilate residential premises with heat recovery; different uses are not permitted and shall exempt the manufacturer from any responsibilities for the consequences resulting from improper use, as well as incorrect installation.
- After removing the packaging, ensure the product is intact; if in doubt do not use it.
- The use of any electrical appliance implies the observance of some fundamental rules. In particular:
 - Do NOT touch the appliance with wet hands, or wet or bare feet.
 - Do NOT expose the unit to atmospheric agents (rain, sun, etc.).
 - Before performing any maintenance or cleaning, disconnect the unit from the mains power supply, opening the all-pole switch installed on the line.
 - Do NOT power the appliance with the lid open.
- The unit complies with 2014/30/EU and 2014/35/EU European Directives.
- Do not obstruct the intake grille.
- In compliance with current accident prevention legislation, ensure that the unit moving parts cannot be accessed after installation. If an appliance operating on gas (or other fuels) is installed in the room to be ventilated, make sure there is an adequate exchange of air to ensure the perfect combustion thereof and proper operation of the fan unit.
- Do not install an extractor fan in the same duct where the fumes of a gas appliance are conveyed.
- The unit can be installed only on a wall

1.1.3. Regulations



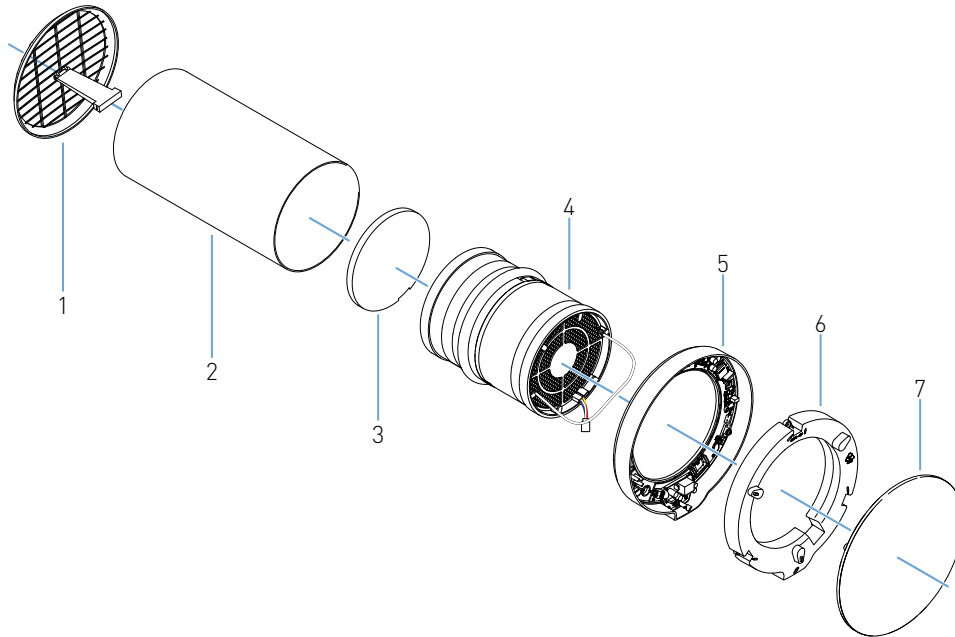
Waste disposal

The crossed-out wheellie bin symbol on the equipment indicates that at the end of its work life, the product must be disposed of separately from other waste.

As such, the user must bring the equipment at the end of its life to appropriate electronic and electrotechnical waste collection centres or bring it back to the dealer when purchasing new equipment that is equivalent on a one-to-one ratio. Appropriate separate collection of the equipment for it to be subsequently recycled, treated and disposed of in an environmentally compatible way contributes to preventing possible negative effects on the environment and on health, and favours recycling the materials that make up the equipment. Illegally disposing of the product will subject the user to administrative sanctions pursuant to Leg.Dec. 22/1997" (article 50 and subsequent of Leg.Dec.no. 22/1997).

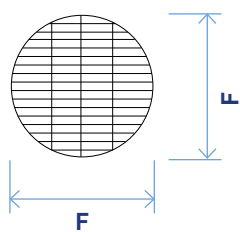
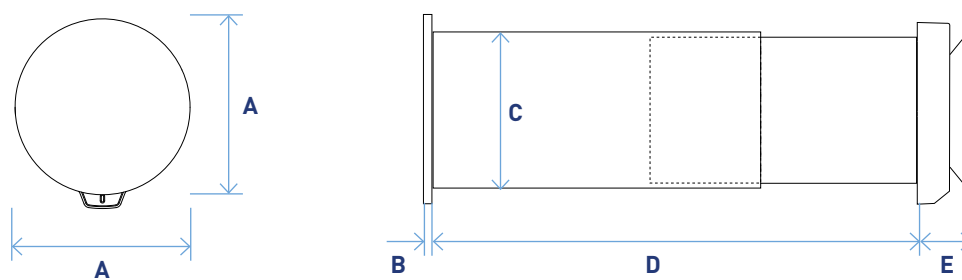
2. Installation

2.1. Contents of package



1. Folding outdoor grille
2. Telescopic tube
3. Filter
4. Cartridge
5. Electronic unit
6. Electronic unit lid
7. Lid

2.1.1. Dimensional data



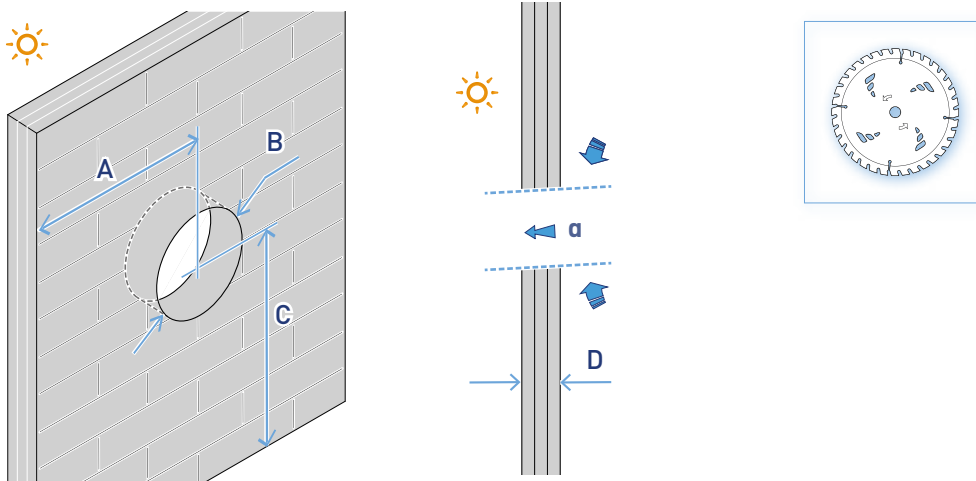
Fan with recovery unit				
A	B	C	D	E
23 cm	2 cm	16 cm	28 ÷ 53 cm	5,4 cm

Outdoor grille	
F	
19 cm	

Back

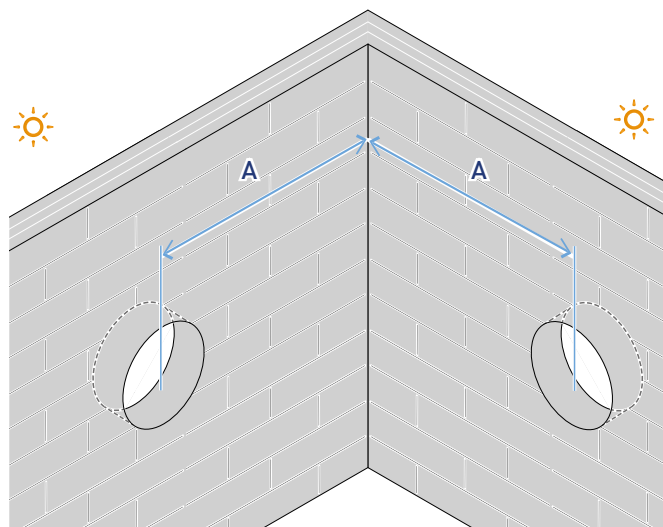
2.2. Type of installation

2.2.1. Wall bore

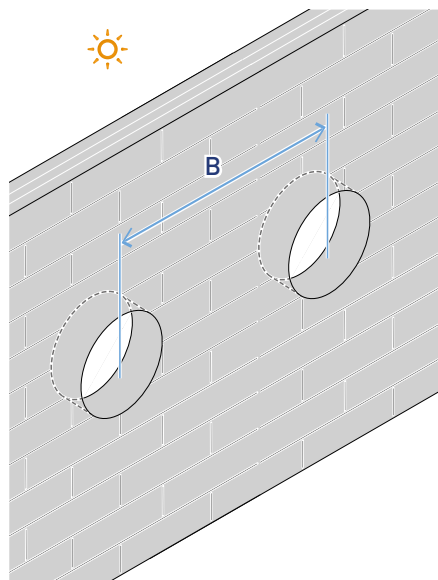


A	B	C	D	α
≥ 20 cm	$\varnothing 16,4$ cm	≥ 230 cm	$28 \div 53$ cm	$1 \div 3^\circ$

2.2.2. Installation of several devices



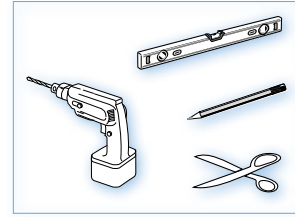
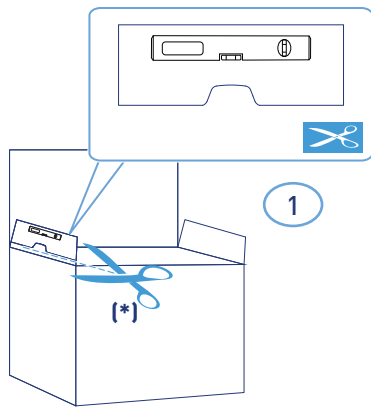
A	≥ 120 cm
----------	---------------



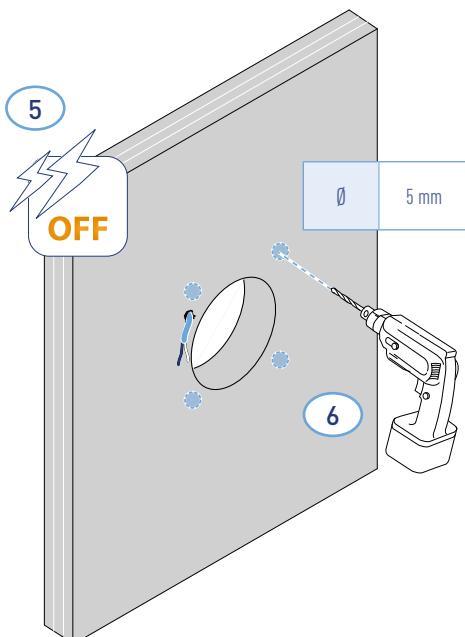
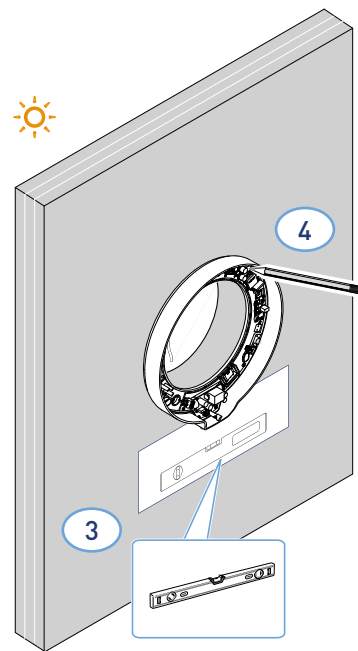
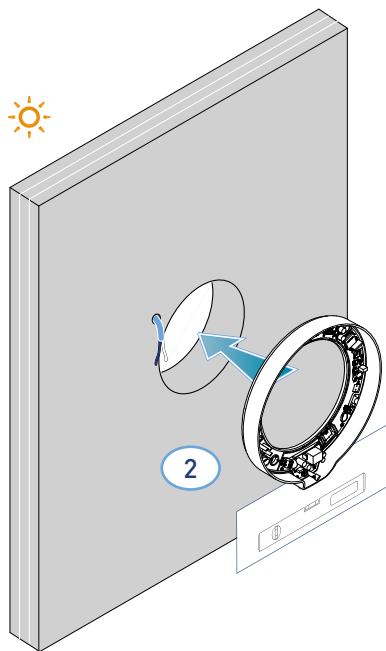
B	≥ 120 cm
----------	---------------

Back

2.2.3. Electronic unit fixing holes

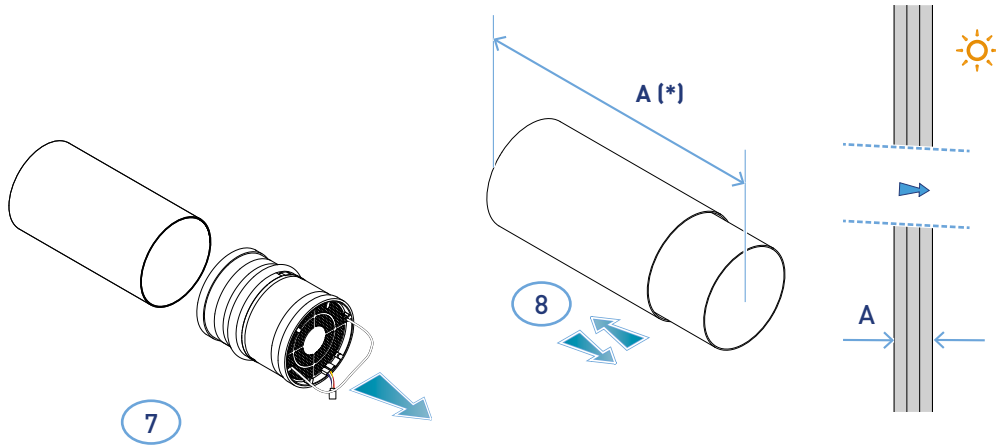


*Drilling template supplied.



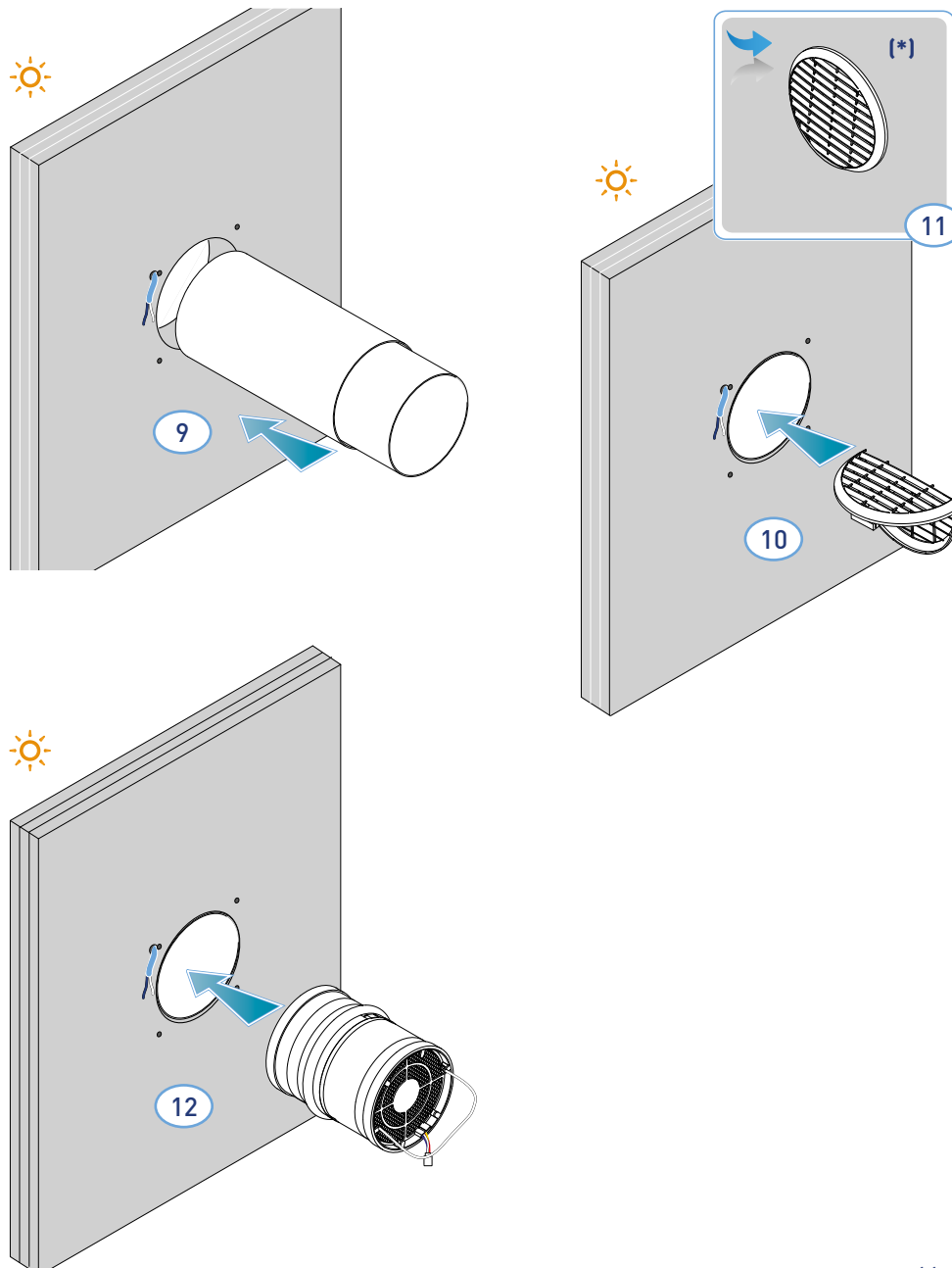
Back

* Adjust according to the thickness of the perimeter wall.

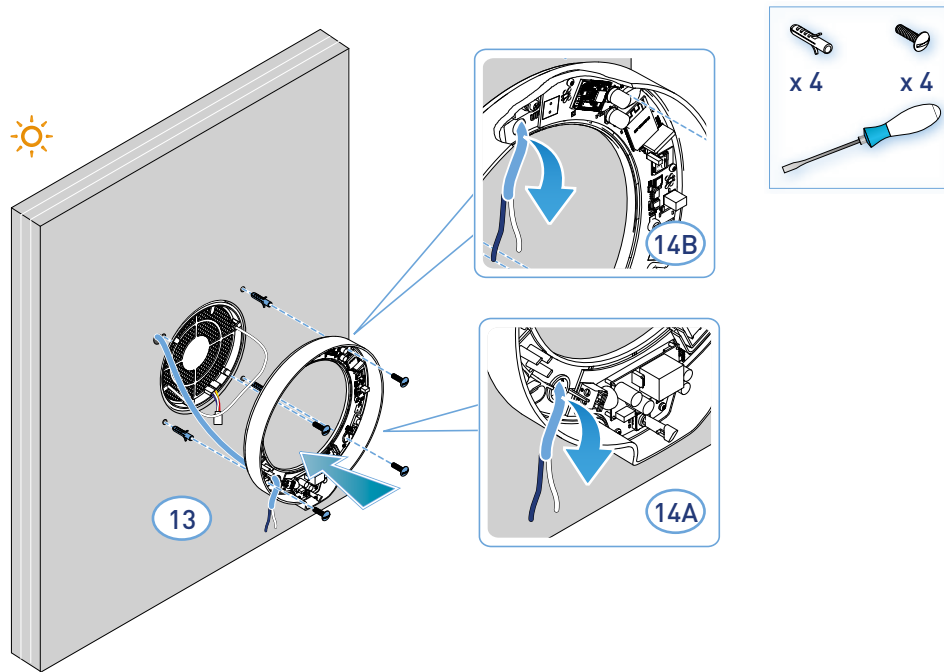


A	
> 28 cm	< 53 cm

*To mount the grille, follow the supplied instructions.

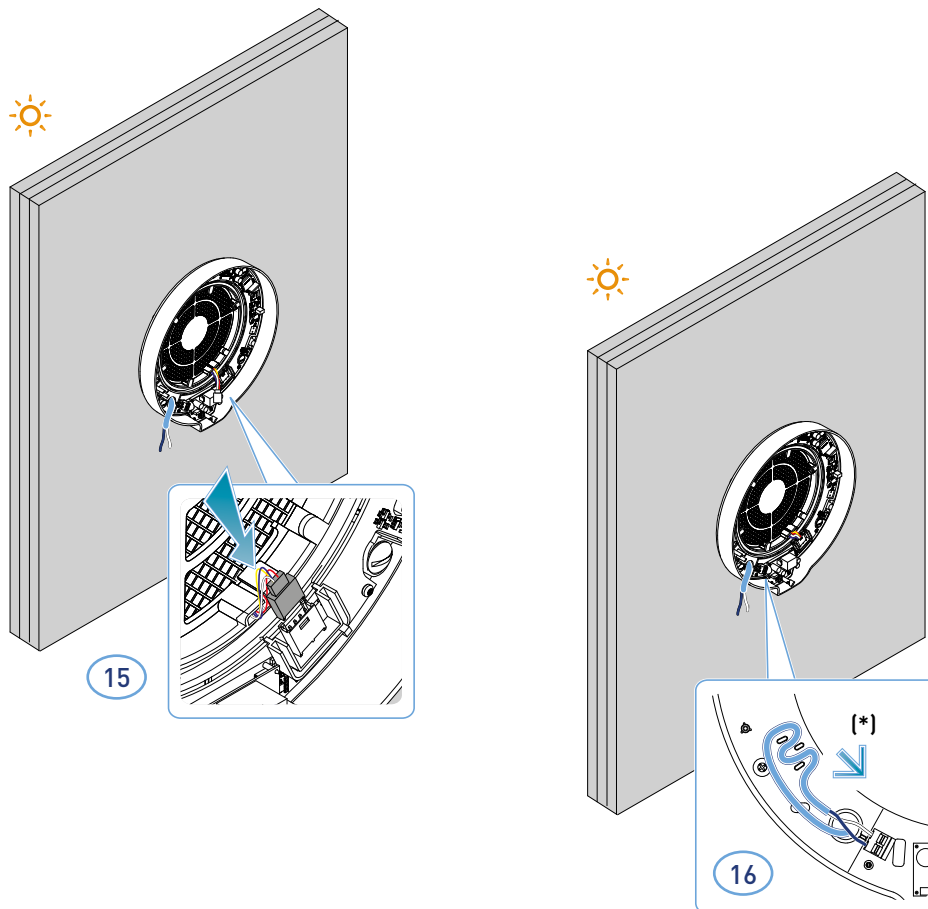


Back



- The unit complies with the double insulation rules (Class II). It does not require an earth cable.

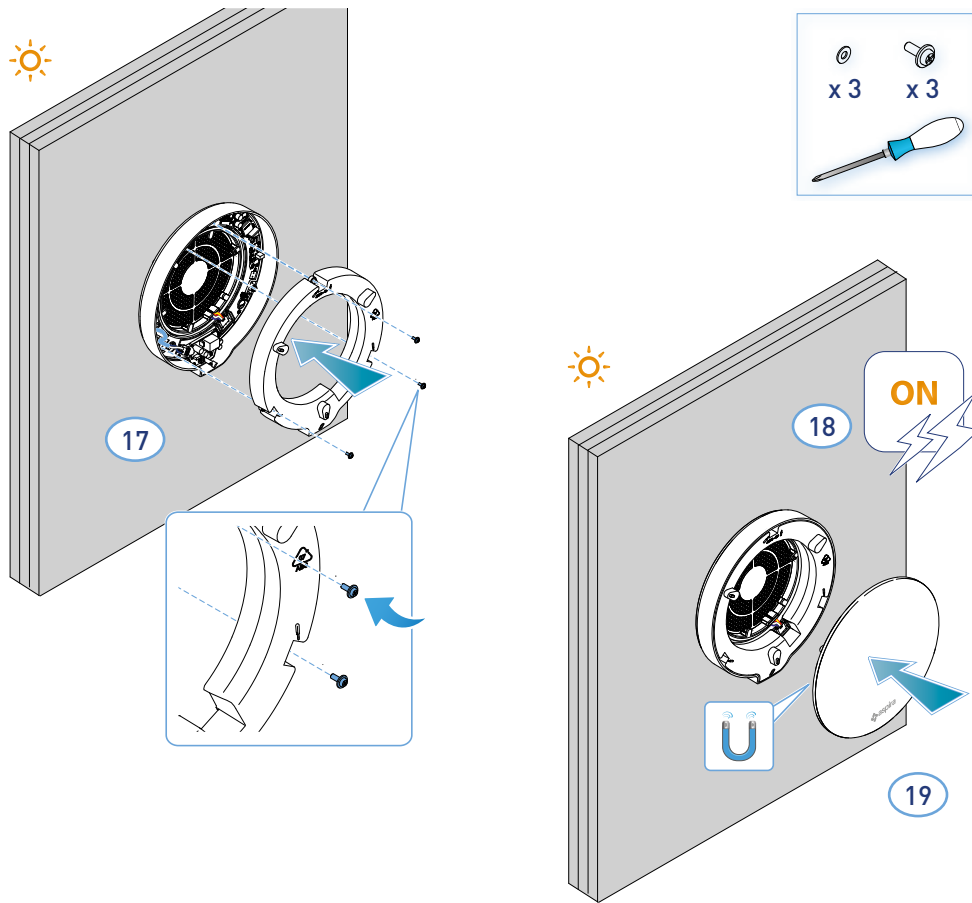
Note: for the entry of power cables, the existing hole 14A or hole 14B can be used after removing the knockout.



* Tear proof

Attention: Do not supply power to ECOCOMFORT 2.0 without first having mounted the electronic unit lid.

Back



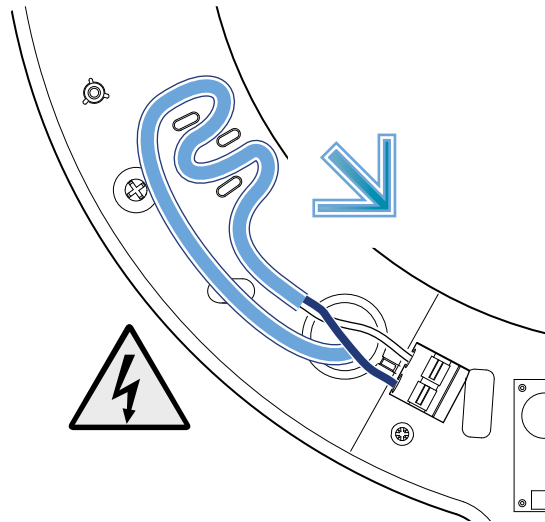
2.3. Connection diagram

Connect the 230V cable to the terminal at the bottom left by running it through the appropriate tear-proof gland



WARNING

In case of a longer power supply failure at 230V, it could be necessary to update the date and the hour from the Intelliclimate+App, as shown in the chapter “4.3.3.6 Day and Time” to restore the Reporting Function.



2.4. Technical data

Speed m ³ /h	Max power input W	Power supply voltage	D2mnTw (*)	dB(A) 1.5 m	dB(A) 3 m	Operating temperature
V1 low 20,5	2,5	230 V- 50 Hz	40 dB	18,5	12,5	(- 20) - (+ 50) °C;
V2 medium 35	4			26,5	20,5	
V3 high 48,5	6,3			32,5	26,5	
V sleep 8	2			ND	ND	

(*) Reduction of noise from outside with kit code AP19881 (in compliance with the Minimum Environmental Criteria for acoustic comfort).

2.4.1. Accessories and spare parts

- Filters class ISO Coarse in accordance with UNI EN ISO 16890:2017 (AP1984);
- Panel for sound, thermal and anti-condensation insulation (AP1985);
- Rain- and windproof grille (code AP1612);
- Outdoor noise reduction kit (code AP19881).

Back

3. Use of the device

3.1. Introduction

After installing and powering the device, proceed as follows [to use its functions](#):

1. download the Intelliglima+ App from the stores and this manual;
2. create an account;
3. pair the device with the App.

1



pdf.fantincosmi.it



2



3



Back

3.2. Creating an account



1. Touch to open the App
2. Enter a username
3. Enter the password (min 6 characters, max 10 letters only and at least 1 number)
4. Repeat the password
5. Enter an email address
6. Enter name and surname
7. Touch to accept the legal notes
8. Touch to confirm
9. Touch to finish

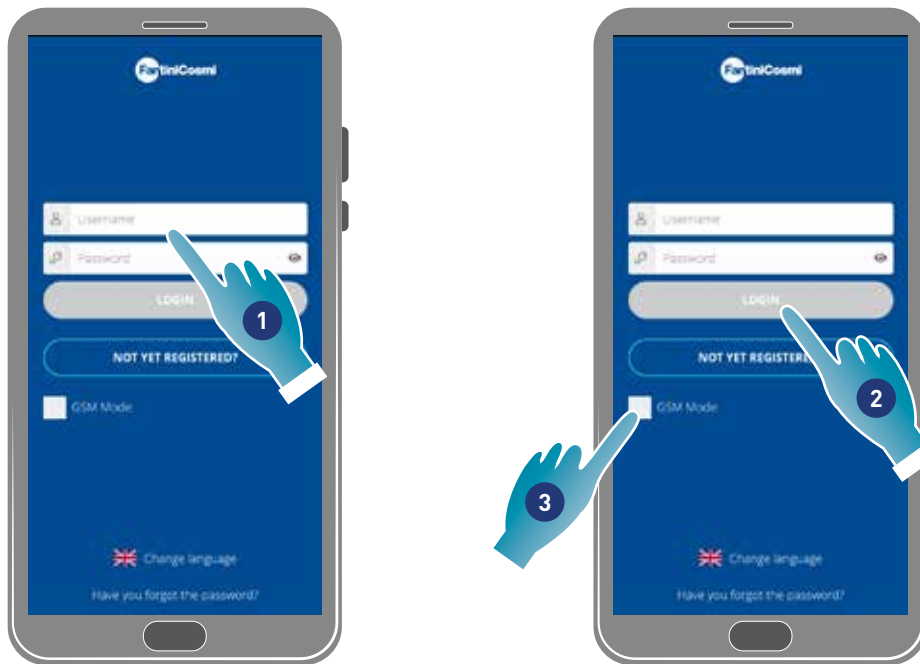
A message will confirm the creation of an account, now you can [pair the device with the App](#).

Back

3.3. Pairing the device with the App

The device can be paired with the App as a Master or Slave device, see [Key concepts](#) for details.

The configuration difference between Master controller and Slave unit will be highlighted at point [23](#)



1. Enter your username and password (required only for Wi-Fi mode).

At this point you can activate the **Wi-Fi** or **GSM/NFC/BLE**, mode; in the latter case, you will not be able to use all the functions of the device.

Wi-Fi mode

2. Touch to use in Wi-Fi mode and go to point [6](#)

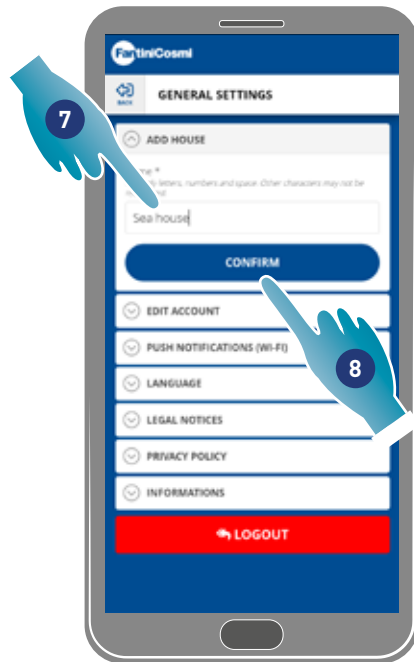
BLE mode

3. Touch to use in Bluetooth low energy mode (you may need to enable the GPS connection on some smartphones).

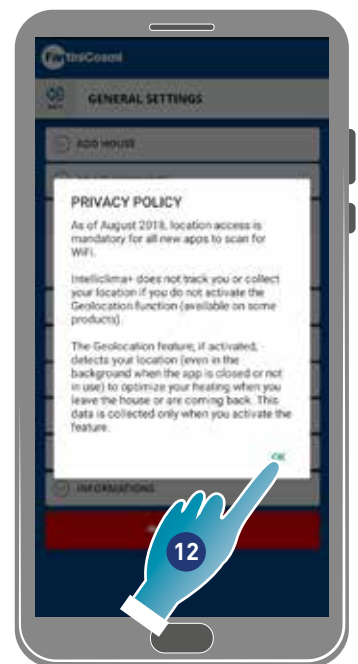
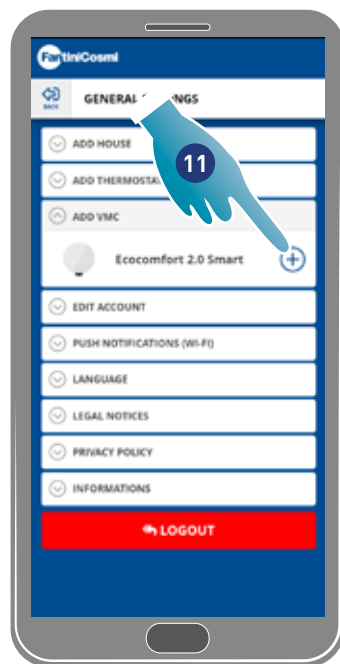
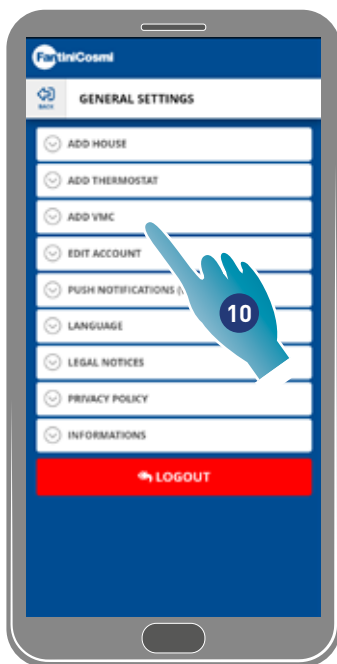


4. Touch to accept
5. Touch to confirm

Back



- 6. Touch to create a new home.
- 7. Enter a name for the home
- 8. Touch to confirm
- 9. Touch to add a device



- 10. Touch to add a device
- 11. Select Ecomcomfort 2.0 Smart.
- 12. Touch to accept the Privacy policy

Back



13. Touch to allow access to the position of your device.

Note: you may need to enable "Always" in the settings of some types of Smartphone (App intelli clima+)

14. Touch to select the device (if you know the serial number), otherwise

15. Touch to read the QR code

16. Frame the QR code with your smartphone

At this point:

- if the device to be paired has never been paired go to point [17](#);
- if, on the other hand, the device was previously configured, go to point [19](#).

First configuration



Pre-existing configuration



17. Touch to confirm and wait for the blue LED on the device to light up

18. Press the blue button on the device for about a second

19. Touch to keep the pre-existing configuration

20. Touch to overwrite the pre-existing configuration

Back

Pre-existing configuration



- 21. Set date and time.
- 22. Touch to enable automatic update to daylight saving time
- 23. Touch to continue.

If the device is the first to be paired, it is automatically configured as a Master.

From the second paired device, you can decide whether to install the device as a Master or a Slave unit, see point [26](#).

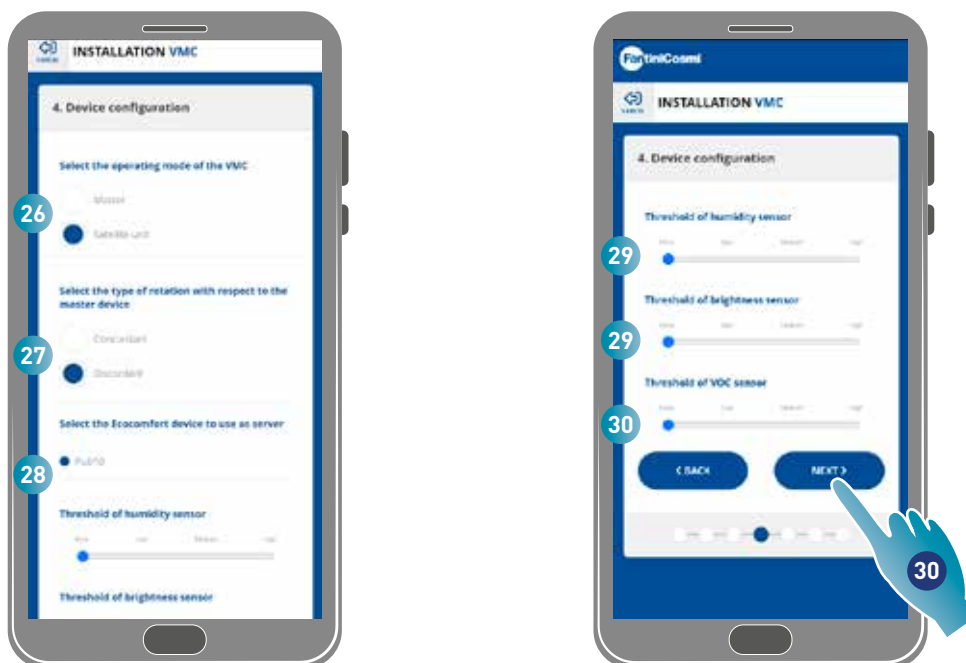
Master configuration



- 24. Set sensor thresholds (see [device settings/advanced settings/Sensor thresholds](#))
- 25. Touch to continue.

Back

Slave unit configuration



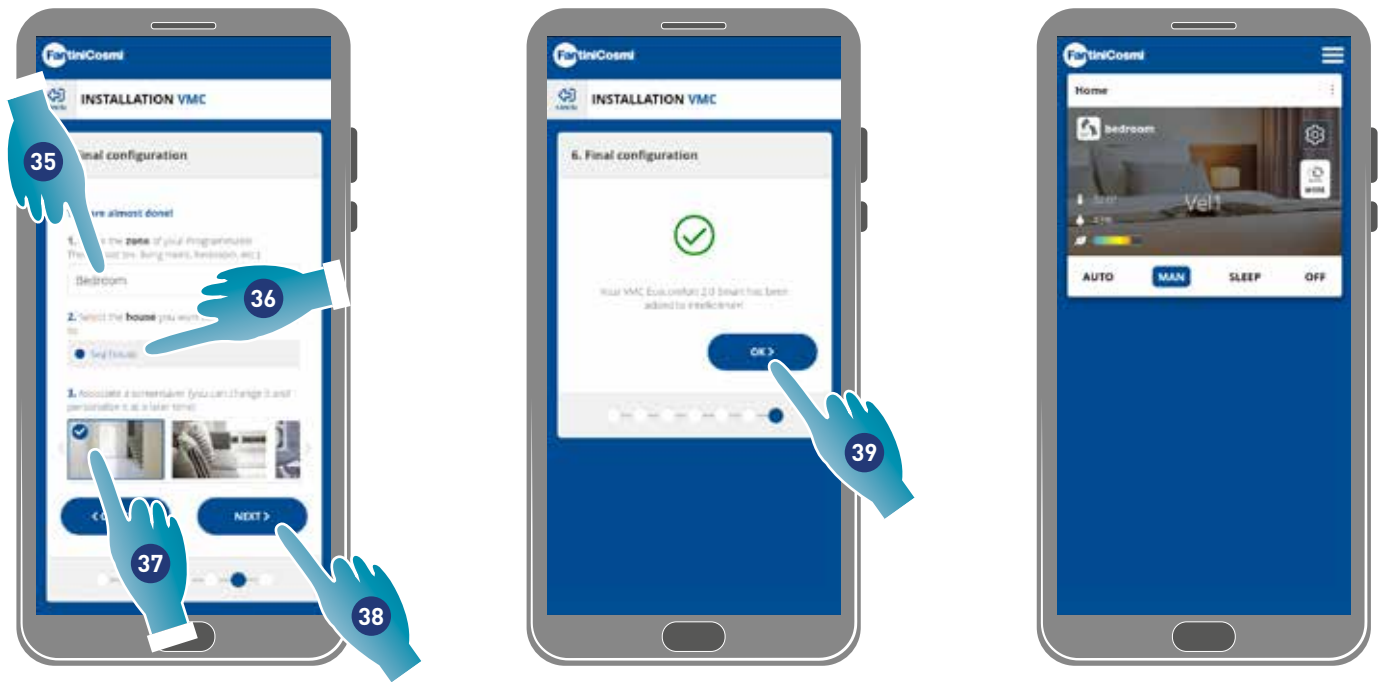
- 26. Select Master or Slave*
- 27. If Slave is your choice, select whether the fan rotation direction will be the same as that of the master (concordant) or opposite to it (discordant)*
- 28. If Slave is your choice, select the Master it should take the settings from (see [Key concepts](#) for details)*
- 29. Set sensor thresholds (see [device settings/advanced settings/Sensor thresholds](#))*
- 30. Touch to continue*



- 31. Select the Wi-Fi network [2,4 GHz (802.11 b/g/n)] (the network used by the Smartphone is already preselected)*
- 32. Enter the Wi-Fi password*
- 33. Touch to continue*
- 34. Check that the password is correct and touch to confirm*

*Note: In Wi-Fi mode only.

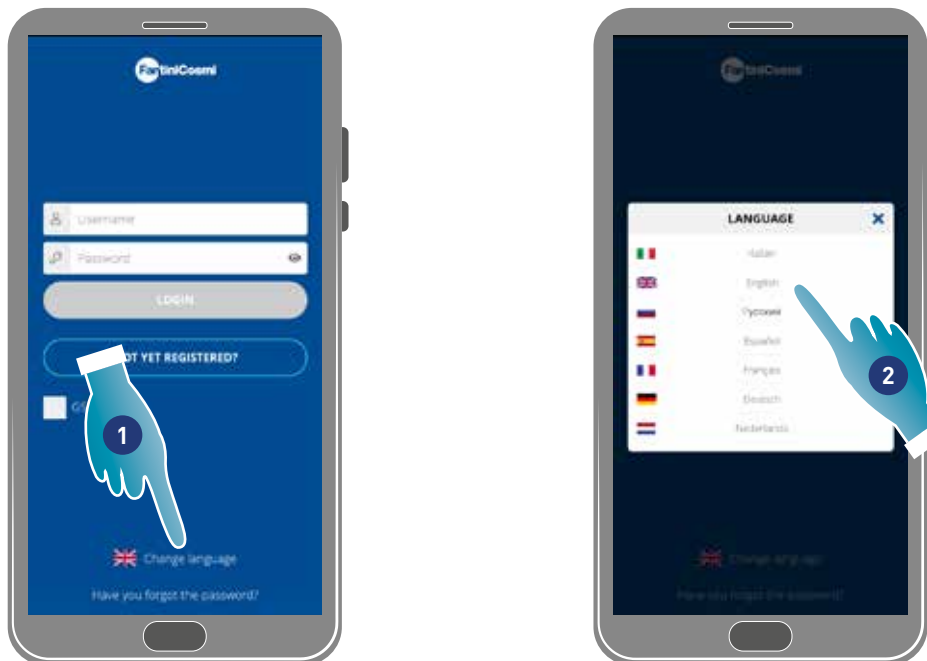
Back



- 35. Enter the name you want to give to the zone.
- 36. Select a home (Master only)
- 37. Select the wallpaper for the zone
- 38. Touch to continue
- 39. Touch to confirm

Now you can control (see [Use of the device](#)) and manage (see [Settings](#)) your device through the App

3.4. Changing interface language



- 1. Touch to edit the language
- 2. Select a language

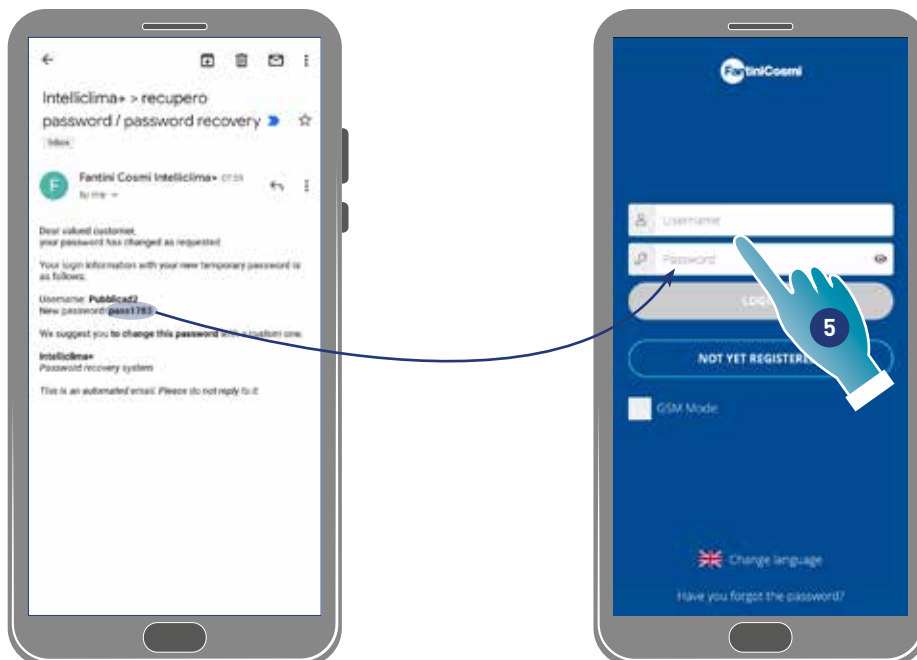
Back

3.5. Password forgotten

This function creates a new temporary password to replace the current one. Please change the temporary password as soon as possible and replace it with a personal one.



1. Touch to start the procedure
2. Enter an email address for your account
3. Touch to confirm, you will receive an email with a temporary password
4. Touch to continue

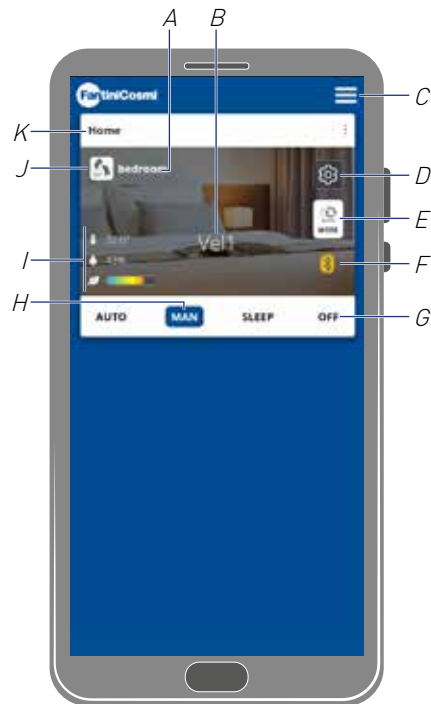


5. Log in using the temporary password received by email

Note: the temporary password can be changed under [General Settings/edit account](#)

Back

3.6. Home page



A Room name

B Active speed

C App general settings

D Device settings

E Operating cycle

F No Bluetooth connection between device and smartphone

G Functions toolbar:

AUTO selects [automatic mode](#);

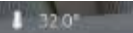
MAN selects [manual mode](#);


SLEEP selects [night mode](#);


OFF [switches the device off](#).

H Active function

I Parameter display:

 displays measured temperature;

 displays measured humidity;

 displays the detected air quality (VOC).

J Active speed

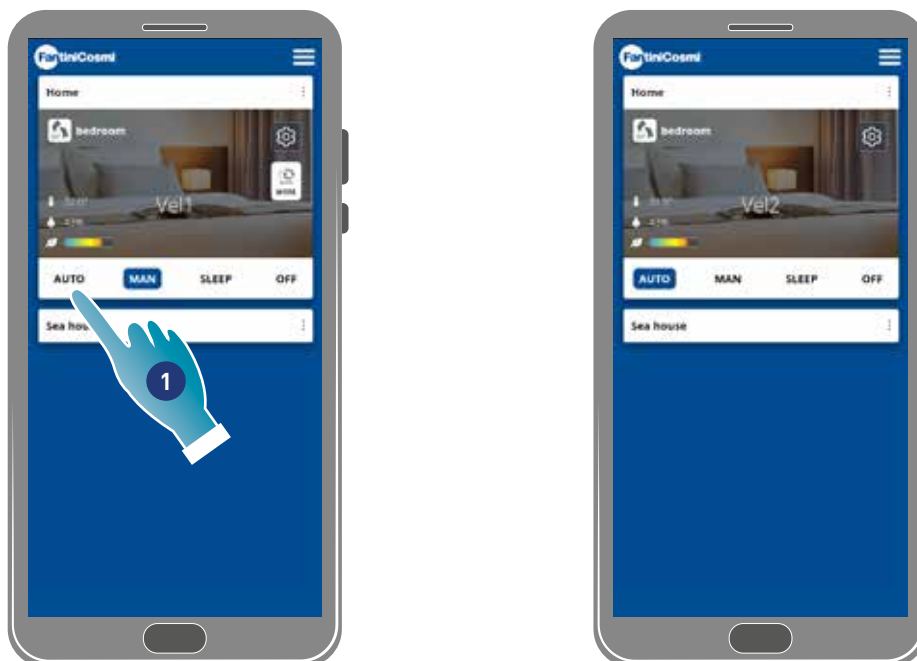
K Home name

Back

3.7. Functions with Intelliclima plus App

3.7.1. Automatic mode

The device adjusts the parameters to the programmed profiles in this mode (see [Device/programs settings](#)).

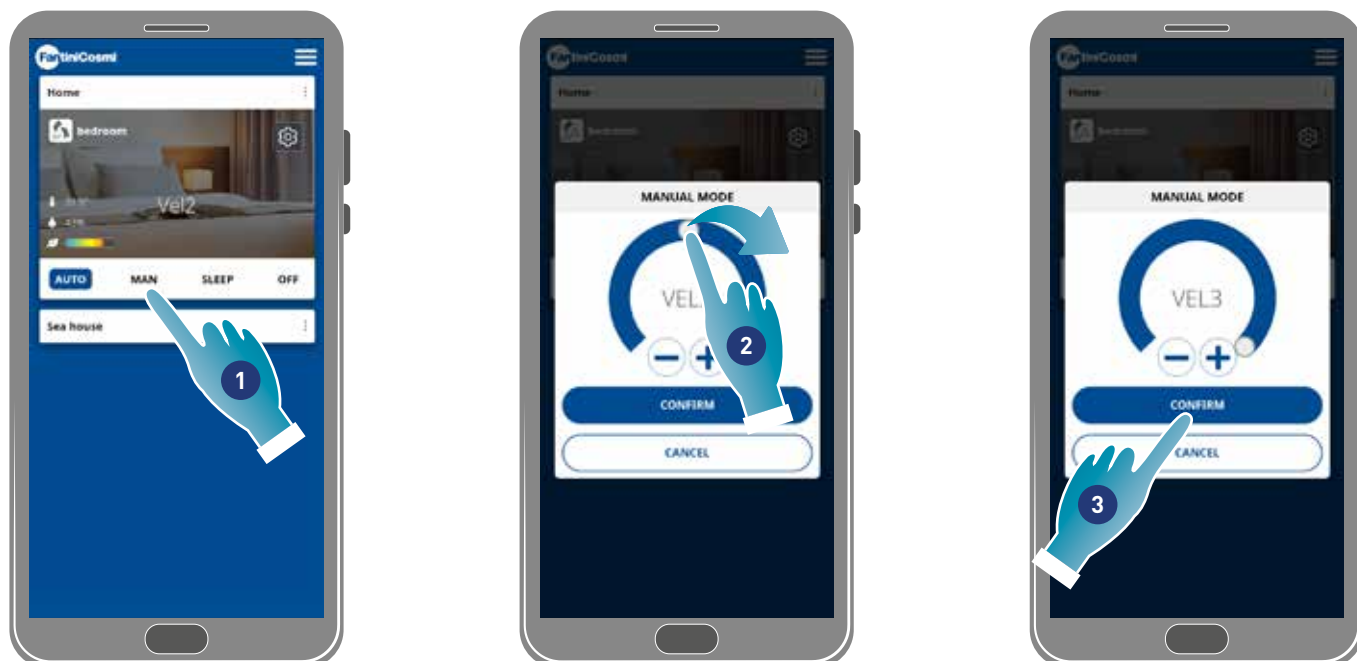


1. Select a mode

Now the device will follow the active profile that sets the **Speed, Sleep and Off** parameters **every half hour and according to a daily schedule**. The program **follows an alternating cycle** between air supply from the outside and air exhaust from the inside which can vary from 35 to 200 seconds

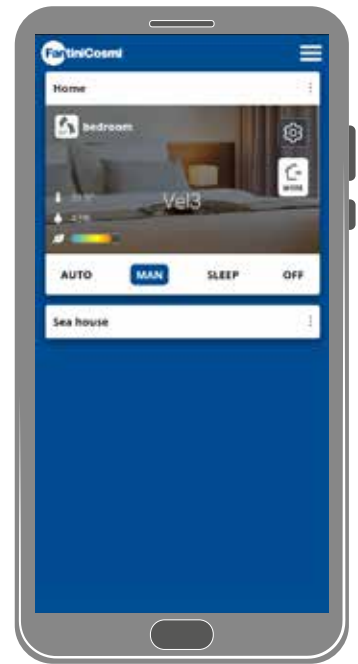
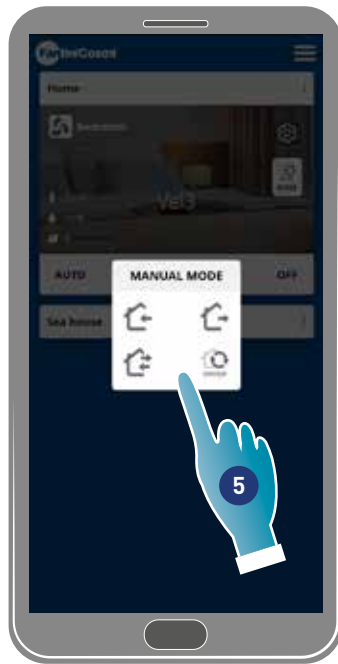
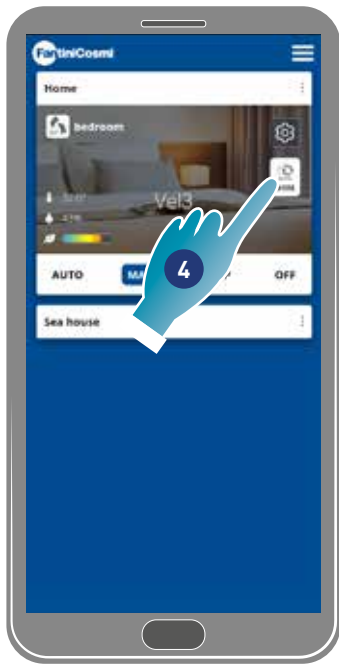
3.7.2. Manual mode

Speed and operating mode can be directly set in this mode.



1. Select a mode
2. Touch and drag to select the speed in ascending order (VEL 1 -VEL 2 -VEL 3)
3. Touch to confirm

Back



4. Touch to modify the operating cycle

Air supply from the outside*

Air exhaust from the inside*

Alternating supply and exhaust with a 45 sec cycle

Alternating supply and exhaust with operation depending on the thresholds set on [sensors](#)

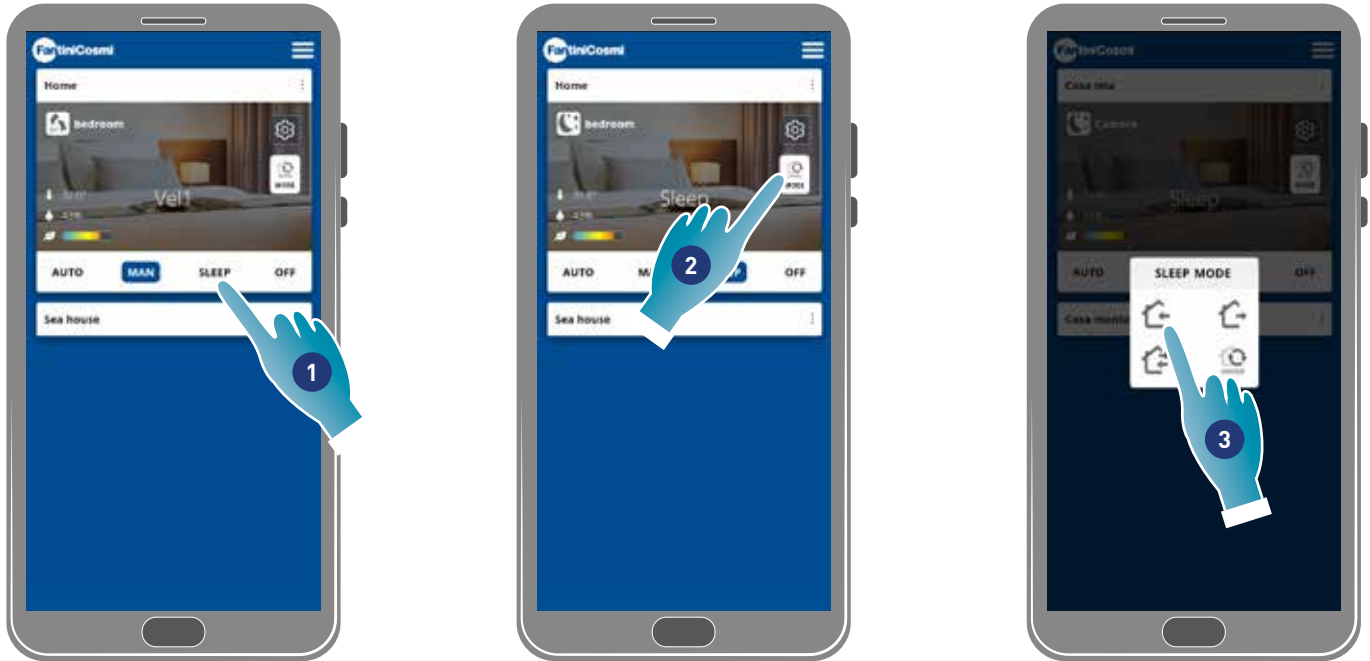
5. Touch to select a mode

***Note:** this mode remains active for 60 minutes, then it will return to automatic mode


Back


3.7.3. Sleep mode


A minimum speed (lower than VEL 1) can be set in this mode.
This speed reduces noise to a minimum and can, therefore, be used at night.




1. Touch to select a mode
2. Touch to modify the operating cycle
3. Touch to select a mode

 Air supply from the outside*

 Air exhaust from the inside*

 Alternating supply and exhaust with a 45 sec cycle

 Alternating supply and exhaust with operation depending on the thresholds set on [sensors](#)

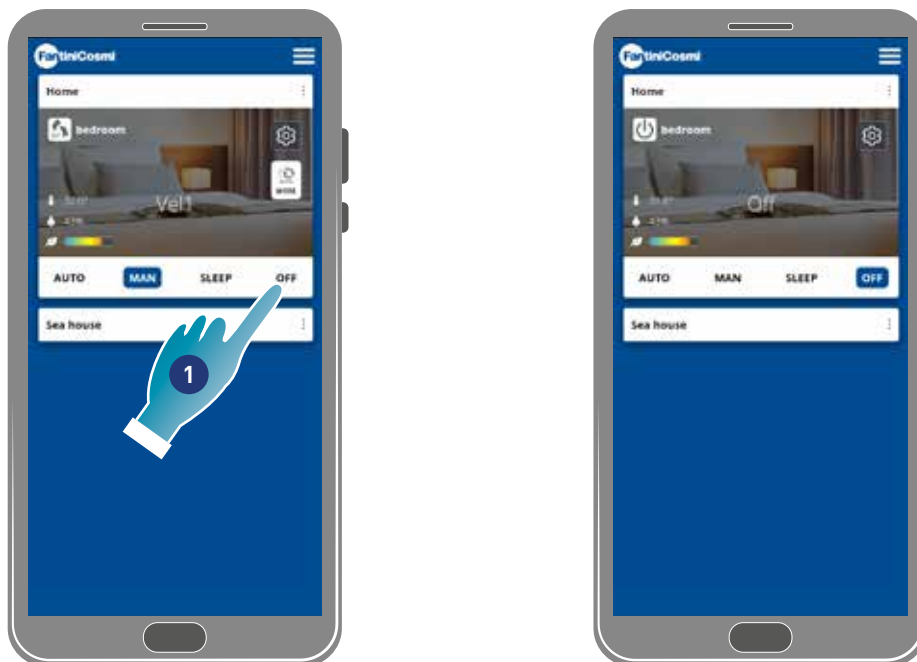
***Note:** this mode remains active for 60 minutes, then it will return to automatic mode



Back

3.7.4. Off mode

The device is switched off in this mode



1. Select a mode

Now the device will remain off until the next schedule

[Back](#)

4. Settings

The Intellliclima+ App can be used to edit various parameters of both the device and the App overall.



[App General Settings](#)

Adds homes and fans, edits parameters such as account and interface language, and displays various information. Also used to exit the App.



[Home Settings](#)

Edits a home name and removes a home

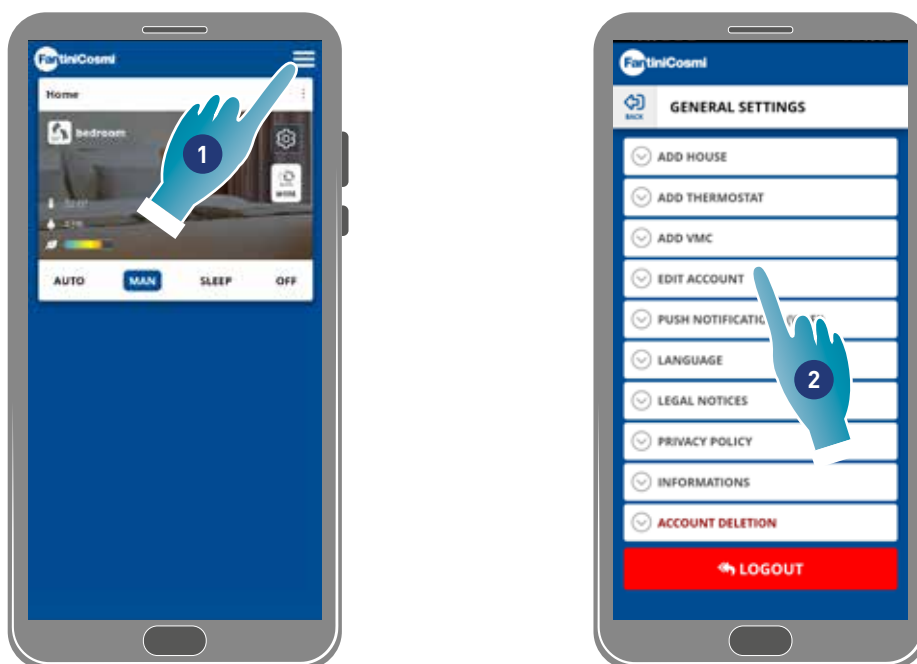


[Device settings](#)











Creates new programs or edits pre-existing ones, displays various information such as reports etc., edits zone name and wallpaper, manages the device and performs advanced settings.

Back

4.1.  App General Settings



1. Touch to open general settings
2. Touch the desired function

 ADD HOUSE	<u>Adding a new home</u>
 ADD THERMOSTAT	Adds a programmable thermostat (see programmable thermostat instruction manual for details)
 ADD VMC	<u>Adds a new VMC to the home</u>
 EDIT ACCOUNT	<u>Edits some details of your authentication account</u>
 PUSH NOTIFICATIONS (WI-FI)	<u>Enables the receipt of push notifications</u>
 LANGUAGE	<u>Changes the interface language</u>
 LEGAL NOTICES	Displays some legal notes
 PRIVACY POLICY	Displays the privacy policy
 INFORMATIONS	<u>Displays some device information and finds the mac address</u>
 ACCOUNT DELETION	<u>Removal of personal data</u>

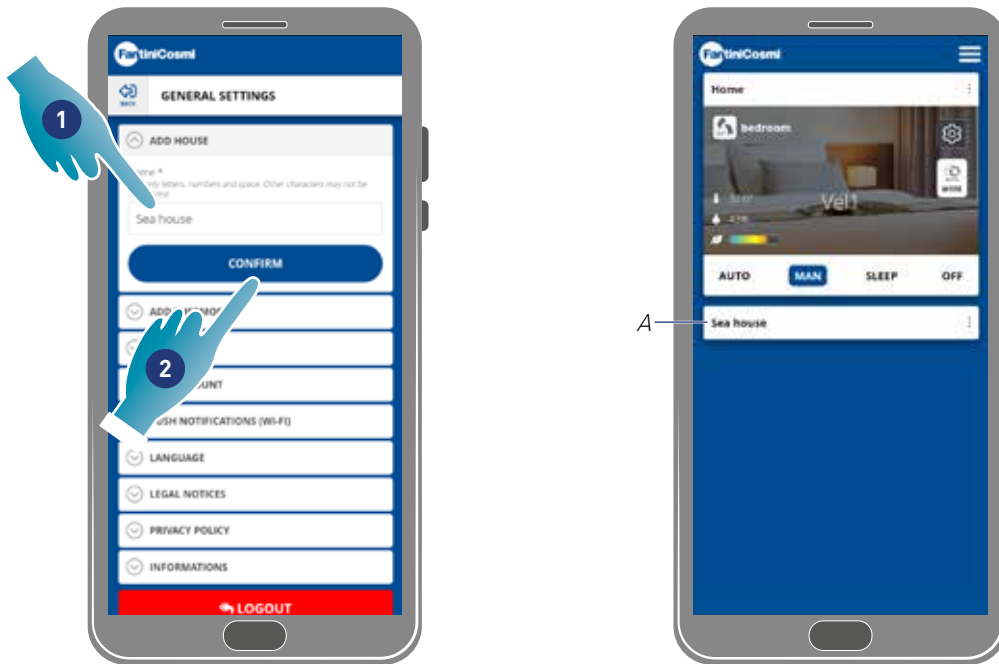


Logs out of the account

Back

4.1.1. Adding home

A new home can be added in this section. This enables you to manage several homes on the same Smartphone.



1. Enter a home name

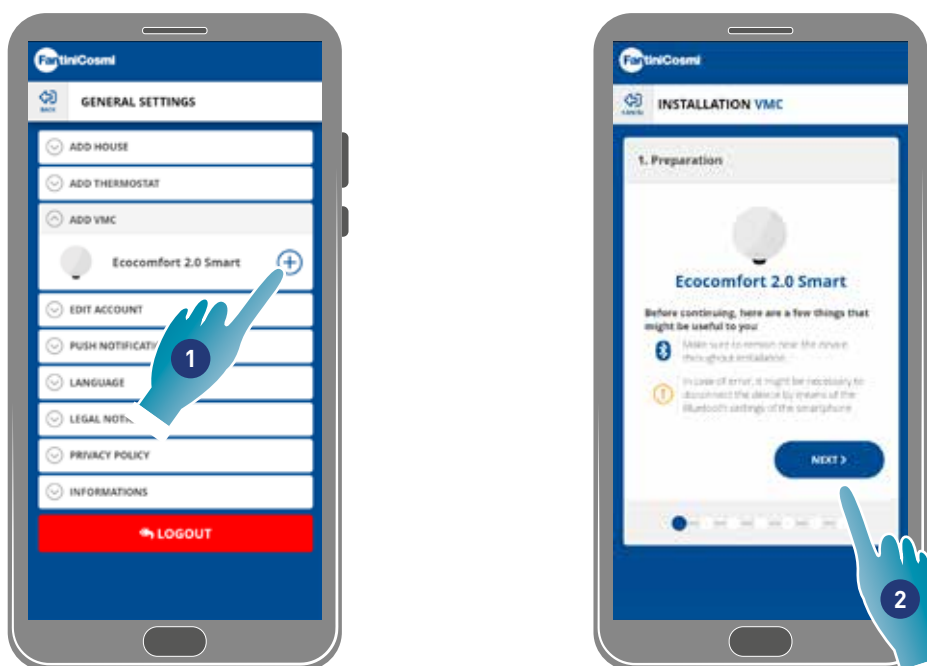
2. Touch to confirm

A A new home is displayed on the Home page

A home can be **renamed** or **removed** under [Home Settings](#)

4.1.2. Add Vmc

A new device can be added to a home in this section



1. Touch to add a device

2. Touch to start the pairing procedure (see [Pairing a device with point 15](#))

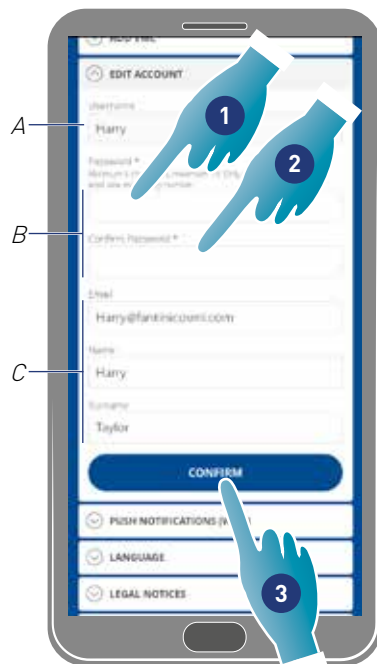
Back

4.1.3. Editing an account

Some details of your authentication account can be edited in this section.

Note: *this function cannot be used in BLE mode*

Changing password



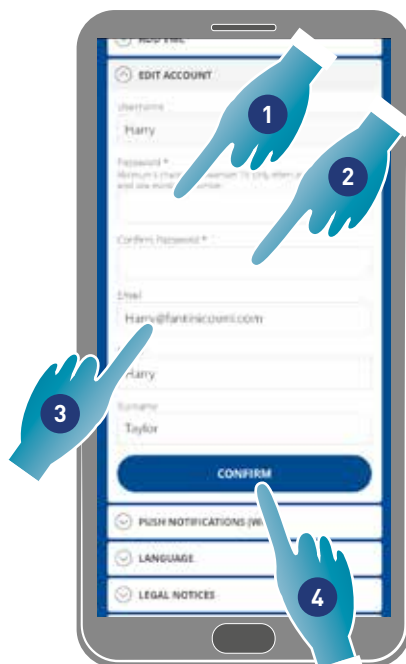
A View the user name

B Change your password

C Edit communication email address and user data

1. Enter the new password (minimum 6 maximum 8 characters, only letters and numbers, at least one number required)
2. Repeat the new password
3. Touch to confirm

Editing data



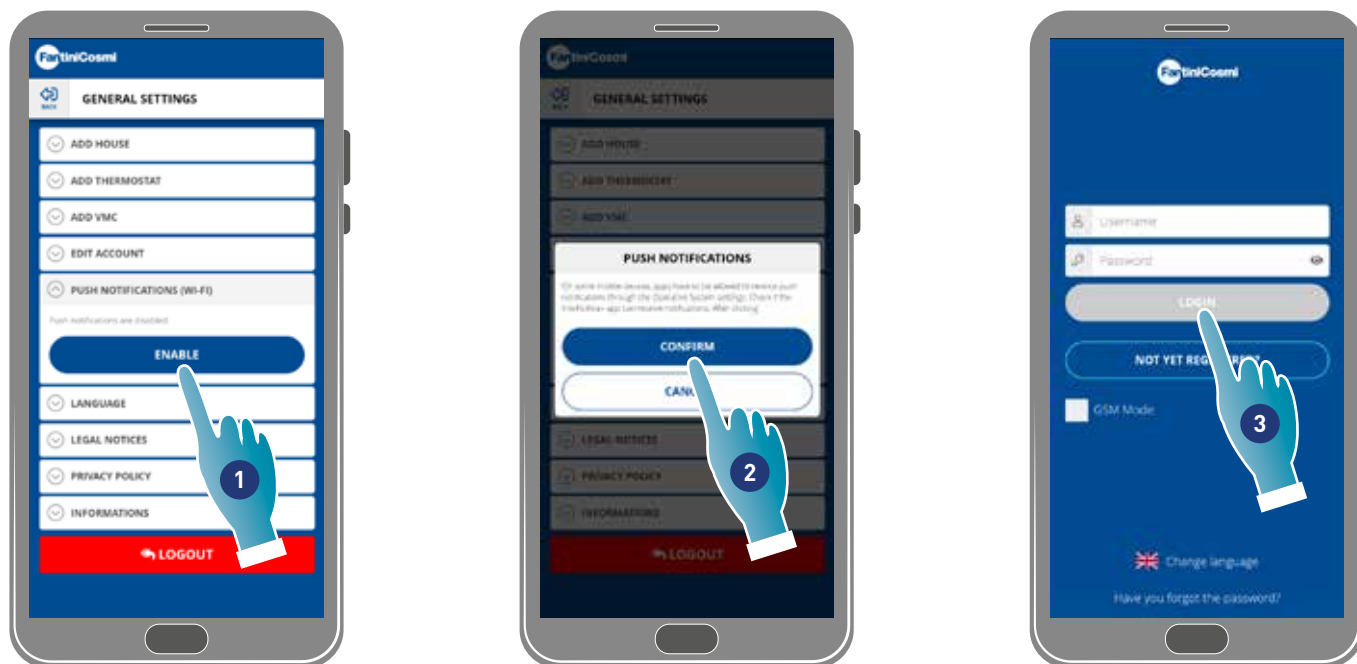
1. Enter password
2. Enter again
3. Edit the email address or the account name
4. Touch to confirm

Back

4.1.4. Push notifications

The receipt of push modifications can be enabled in this section (only for devices managing push notifications)

Note: this function cannot be used in BLE mode.

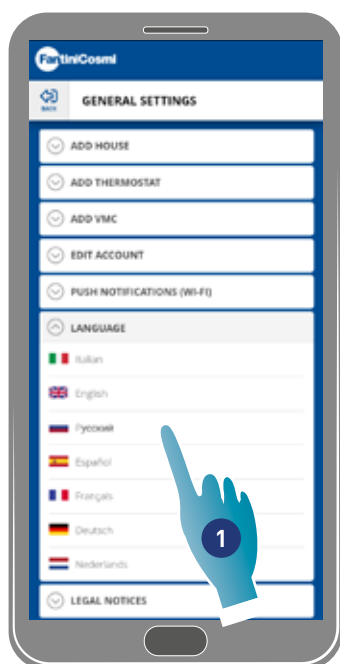


1. Touch to enable/disable notifications
2. Touch to confirm
3. Repeat authentication

Note: you may need to enable notification receipt in the settings of some types of Smartphone (App Intelliclimate+)

4.1.5. Language

The interface language can be changed in this section

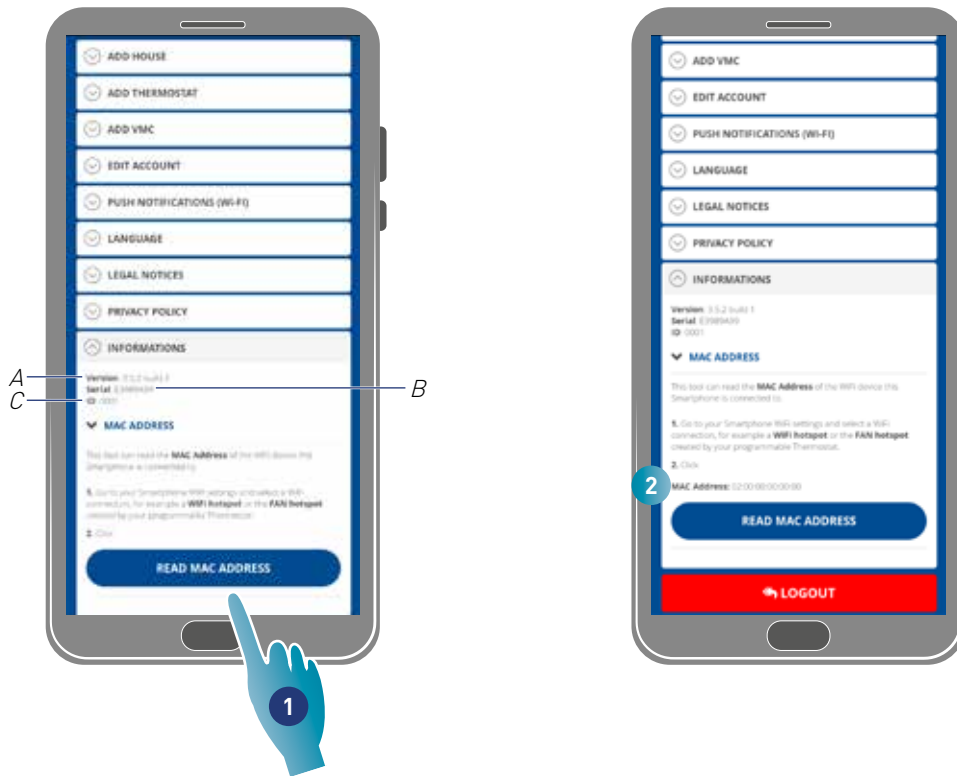


1. Select a desired language

Back

4.1.6. Information

Some device information can be displayed and the mac address found in this section

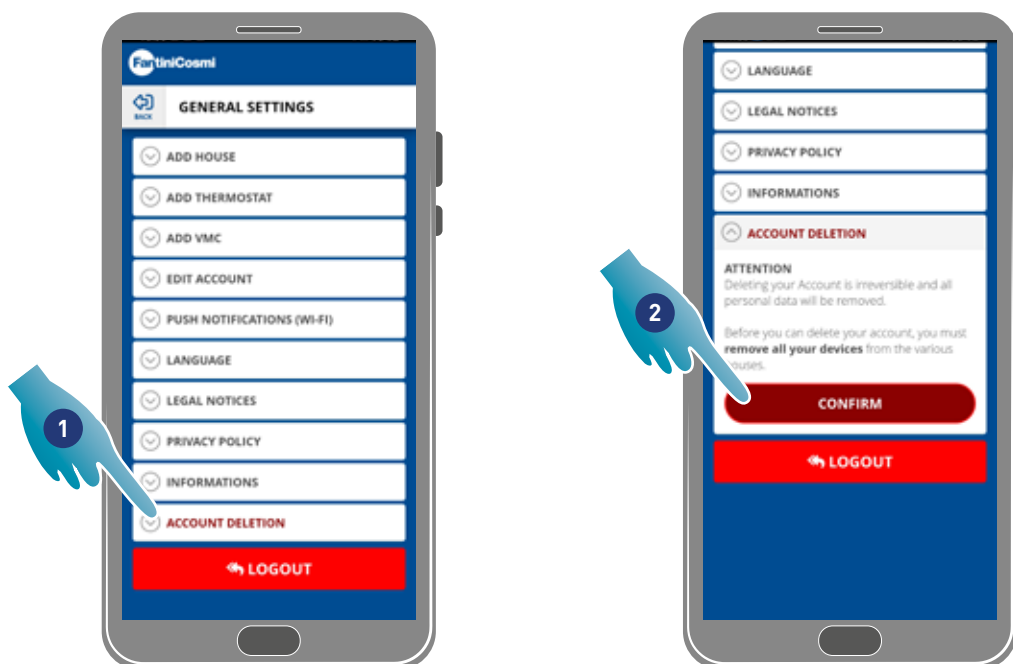


- A View firmware version
- B View serial number
- C View ID

1. Touch to read the device mac address (Wi-Fi connection required)
2. The mac address is displayed

4.1.7. Account Cancellation

In this section you can delete your account and personal data

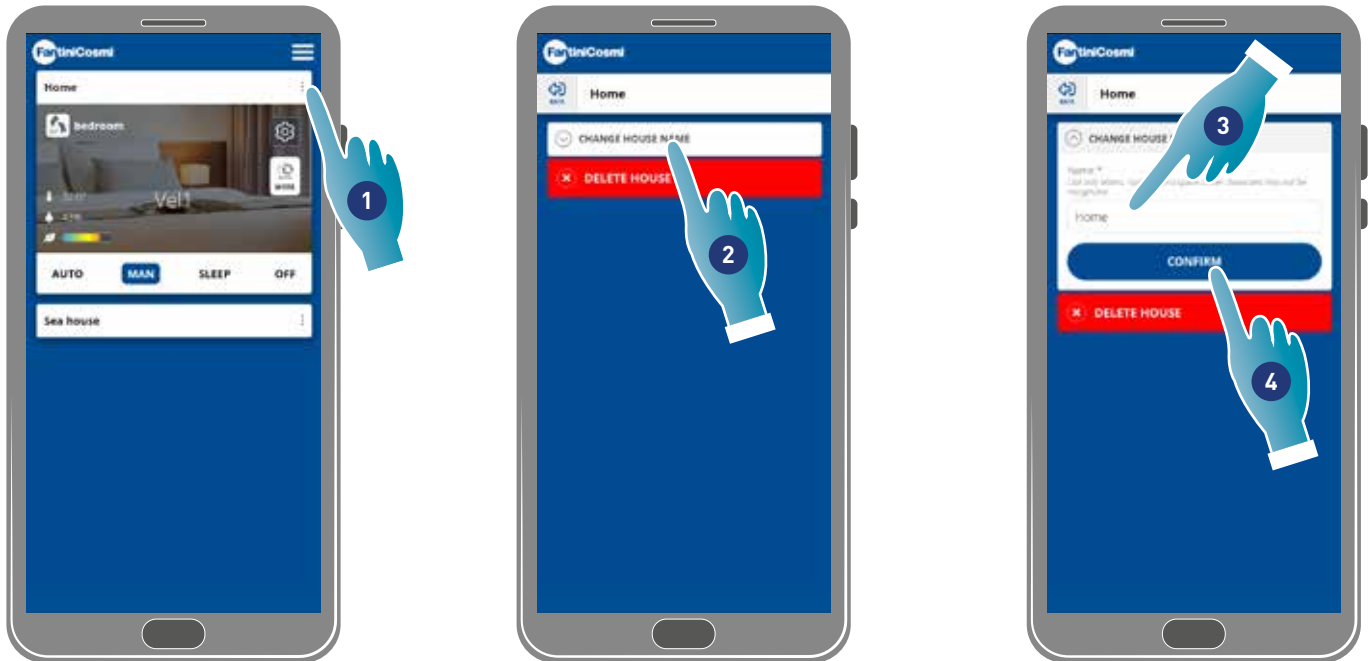


1. Tap to delete your account and personal data
2. Tap to confirm

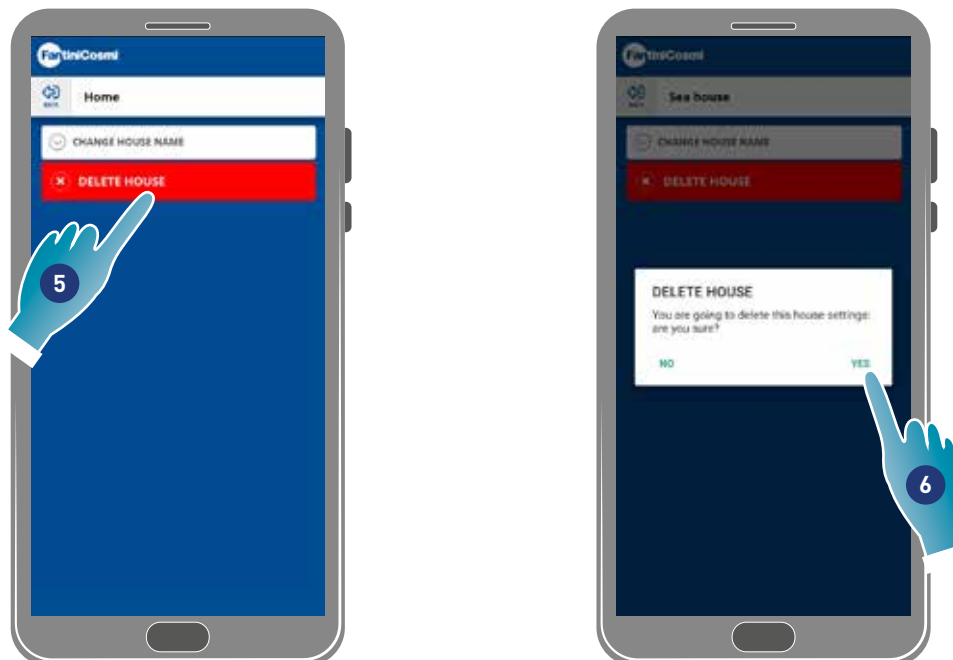
Back

4.2. Home Settings

The name of a home can be edited or a home removed in this section



1. Touch to open home settings
2. Touch to edit name
3. Enter new name
4. Touch to confirm



5. Touch to remove home

Note: to remove a home, all the devices it contains must have first been deleted

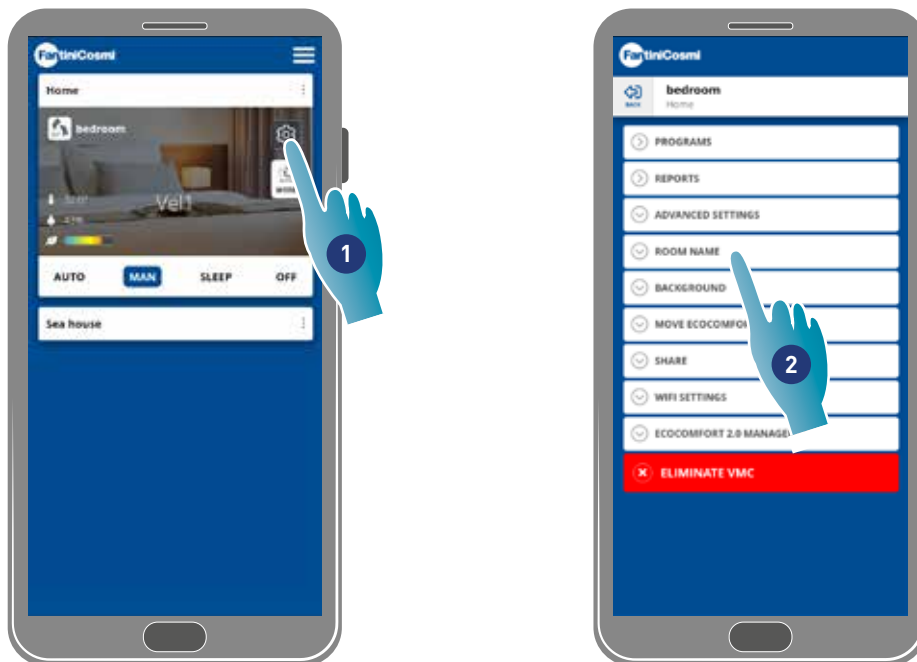
6. Touch to confirm

Attention: by removing a home, all data associated with it will be lost

Back

4.3. Device settings

In this section, you can create new programs or edit pre-existing ones, display various information such as reports etc., edit a zone name and wallpaper, manage a device and perform advanced settings.



1. Touch to open the device settings
2. Touch the desired function

 PROGRAMS

Runs basic programs and creates new programs to set the speed for all week days according to time bands

 REPORTS

Displays the Temperature, Relative humidity, VOC and Speed data recorded in the device.

 ADVANCED SETTINGS

Edits some settings in an advanced way such as Geolocation, Perceived temperature, Filter management, Season, Free cooling, Day and time, Advanced configuration and Sensor thresholds

 ROOM NAME

Defines a name for the zone

 BACKGROUND

Sets a wallpaper for the zone

 MOVE ECOCOMFORT 2.0

Moves the device to another home

 SHARE

Shares the device management with other users, transfers ownership, displays users, and unpairs them from the device

 WIFI SETTINGS

Changes the Wi-Fi network which the device is linked to

 ECOCOMFORT 2.0 MANAGEMENT

Displays some device data and updates firmware

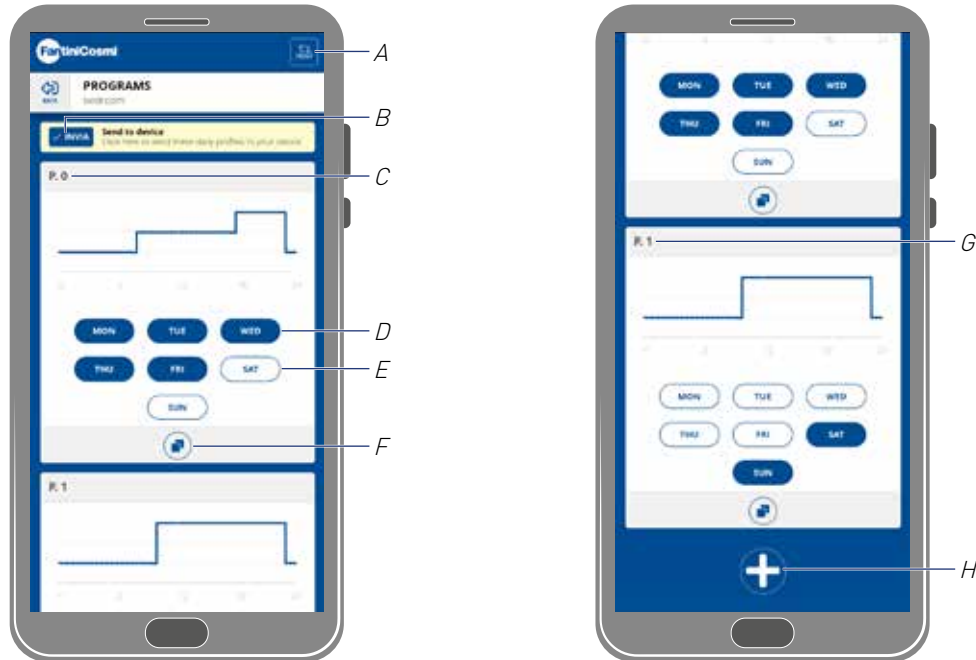
 EXIT FROM SHARING

Unpairs the device from the home it is paired with

Back

4.3.1. Programs

By setting the device in Auto mode, parameters will be adjusted according to the programmed profiles. There are basically 2 profiles where the operating mode can be set for all week days, according to time bands. You can edit the [daily profile by moving it from a program](#) to another among the basic ones, or [by creating a specific program](#). In addition, you can [create/edit the daily profile](#) by directly editing the mode and time band. After setting the programs, [send them to the device](#).



- A Resets programs to factory profiles
- B sends a schedule to the device
- C Basic program P0 (Mon-Fri)
- D Scheduled day
- E Unscheduled day
- F Copies program
- G Basic program P1 (Sat-Sun)
- H Creates new program

Program P0		
Scheduled days	Time band	Speed
Monday - Friday	00:00 → 7:30	Sleep
	07:30 → 17:30	VEL 1
	17:30 → 22:30	VEL 2
	22:30 → 24:00	Sleep

Program P1		
Scheduled days	Time band	Speed
Saturday, Sunday	00:00 → 9:30	Sleep
	09:30 → 22:30	VEL 2
	22:30 → 24:00	Sleep

Back

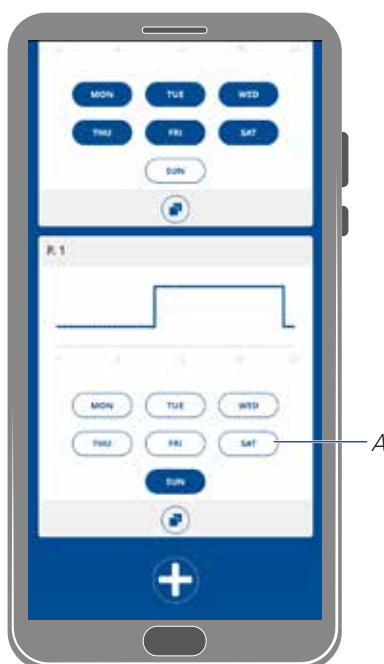
4.3.1.1. Moving a daily profile to another program

Example: set the Saturday profile (basic P1) with the same parameters as program P0 (see table)



1. Touch to add Saturday to program P0
2. Touch to confirm

Saturday has now been also set with the parameters of program P0 (A), it will no longer appear in program P1 (B)



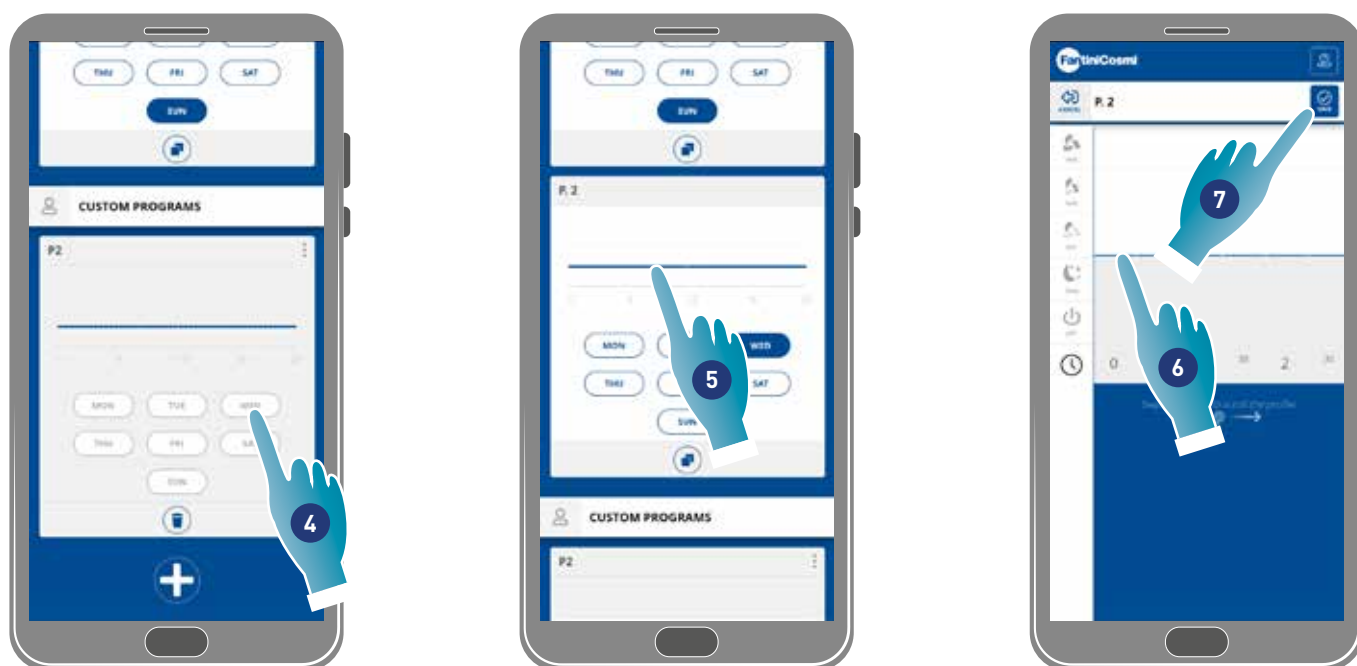
Back

4.3.1.2. Creating a new program

Example: creating a new program to set parameters other than P0 and P1 for Wednesday



1. Touch to create a new program
2. Enter name
3. Touch to confirm



4. Touch to add Wednesday to new program P2
5. Touch to create daily profile
6. Create daily profile (see [Creating/editing daily profile](#))
7. Touch to save schedule

Back

4.3.1.3. Creating/editing a daily profile

Example: creating/editing a daily profile with the following parameters:

Time band	Speed
00:00 → 11:30	Sleep
11:30 → 16:00	VEL 2
16:00 → 24:00	Sleep



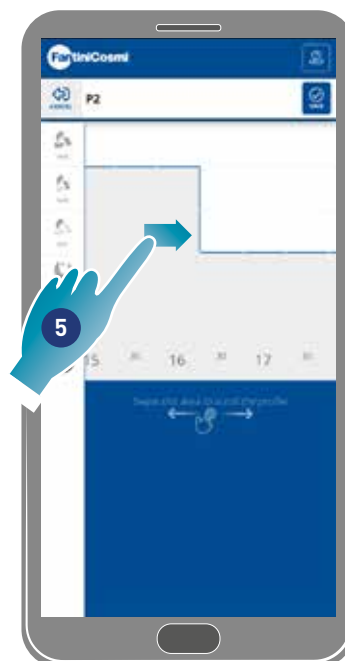
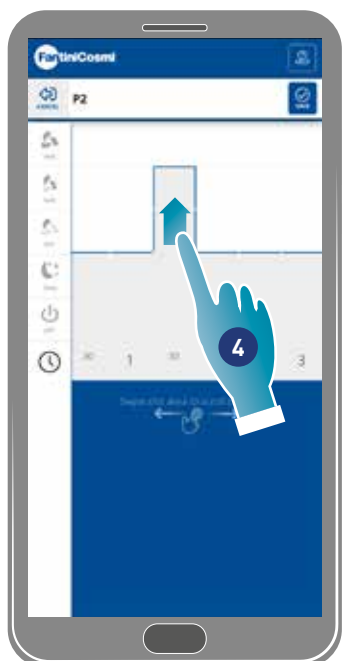
When a new basic profile is created, it is set to sleep speed from 00:00 to 24:00

1. Touch to edit profile
2. Scroll through the blue zone to move to 11:30 am

Note: to select the time, slide your finger only in the blue area to prevent speed from being unintentionally set

- A Save program
- B Time selector that can be set every half hour
- C Transfer zone
- D Speed selector

Back



- 4. Drag to set SPEED 2 at 11:30
- 5. Drag to set VEL 2 up to 16:00



- 6. Scroll to check whether Sleep speed is set from 16:30 to 24:00
- 7. Touch to save
- 8. Touch to confirm

Back

4.3.1.4. Duplicating a program

Use this function to duplicate a pre-existing program; only the time schedule will be duplicated, days will not be assigned.



1. Touch to duplicate the program
2. Touch to confirm

4.3.1.5. Removing a program

Use this function to remove a program from your personal programs.

Note: you can only remove a program if it does not contain any days



1. Touch to remove the program
2. Touch to confirm

Back

4.3.1.6. Sending a program to the device

After creating or editing programs, you need to send the data to the device.

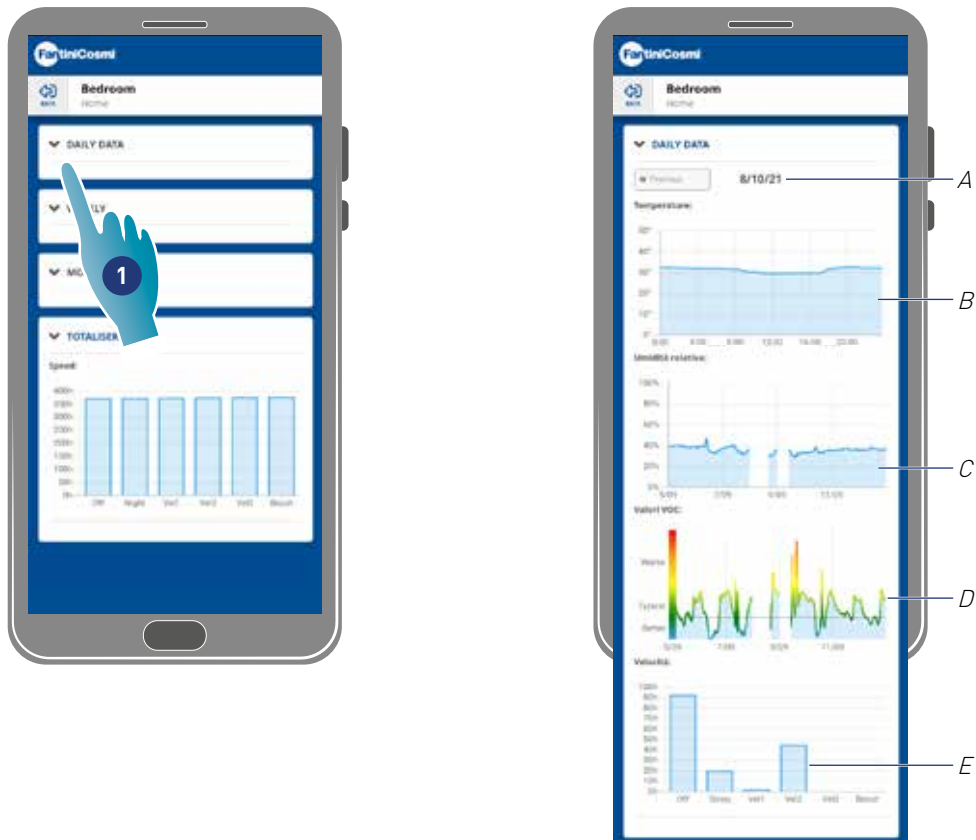


1. Touch to send a schedule to the device
2. Touch to save the configuration
3. Touch to confirm

Back

4.3.2. Reports

In this section, you can display the Temperature, Relative humidity, VOC and Speed data recorded in the device. Said data can be displayed on a daily, weekly or monthly base



1. Touch to view the data in graphical form

A Time reference

B Temperature values (x Time - y °C degrees)

C Relative humidity values (x Time - y humidity percentage)

D Voc values (x Time - y quality)

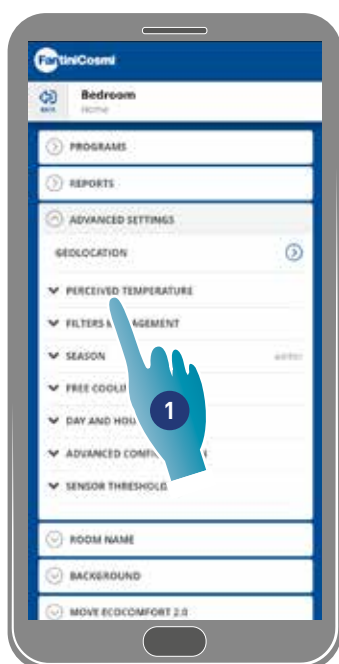
E Speed values (x operating mode - y time)

Back

4.3.3. Advanced settings

Some settings can be edited in an advanced way in this section:

- [geolocation](#);
- [perceived temperature](#);
- [filter management](#);
- [season](#);
- [free cooling](#);
- [day and time](#);
- [advanced configuration](#);
- [sensor thresholds](#).



1. Touch to select a setting

Back

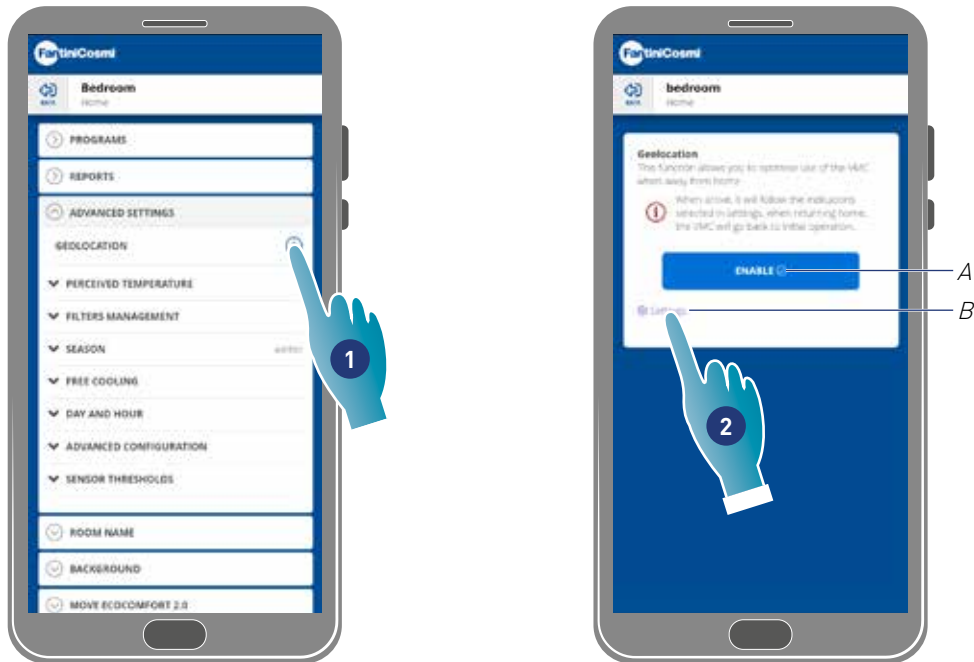
4.3.3.1. Geolocation

By leveraging artificial intelligence, different speeds can be set in this section, based on your position with respect to the device. When the function is enabled, based on the settings made (vsee point 5), the system will record when your family members and you leave and approach home, and will adjust the operation of the device to the real presence of people.

Note: this function cannot be used in BLE mode.

Note: if your device is being shared, you can only enable/disable (See point 3) the geolocation function. Parameters such as range of action etc. will take the values set from the owner user.

Note: a maximum of 4 Master devices can be geolocated in each home. The slave units will follow accordingly.



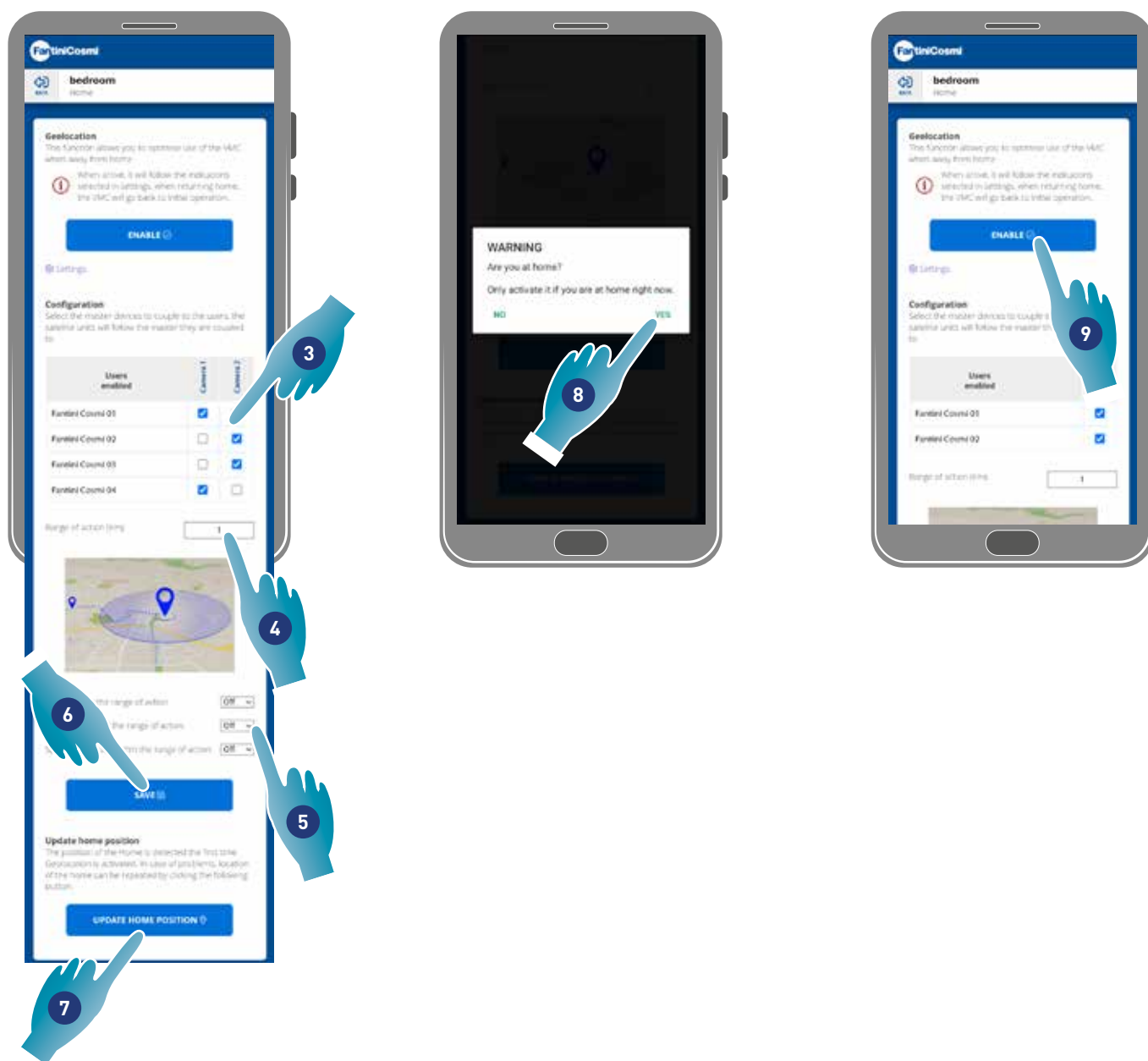
1. Touch to manage the function

A Enables/disables function

B Opens settings screen

2. Touch to set geolocation

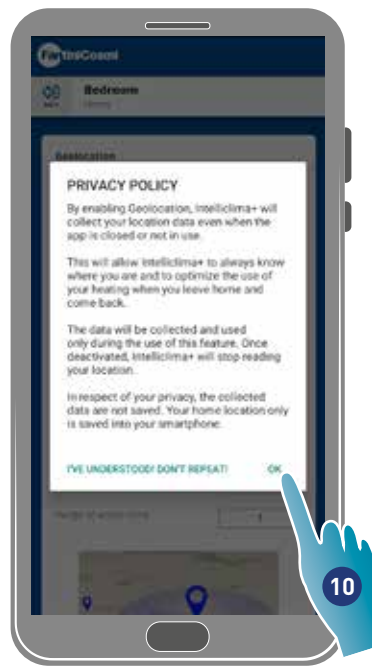
Back



3. Select the master device you want to manage on the desired user, the slave units will take its configuration
 4. Set the range of action (Perimeter area for device management)
 5. Set the speed of the device in the 3 conditions:
 within the range of action (Speed that will be set from about 150m from home exit up to the distance set under Range of action);
 when exiting the range of action (Speed that will be set after exiting the range of action);
 upon re-entering the range of action (Speed that will be set when re-entering the range of action and kept until returning home where it will return to the previously set mode).
 6. Touch to save
 7. Touch to find the home position
 8. Touch to confirm if you are at home
- Note:** carry out this action near the device to be used. You will also be asked to confirm the position
9. Touch to enable the function according to the newly set parameters.

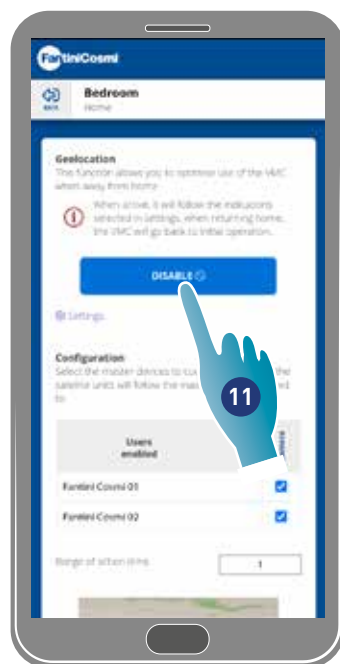
Note: Activation/deactivation and the speeds of the device will be notified with messages

Back



10. Touch to confirm the privacy conditions

Now the function is active



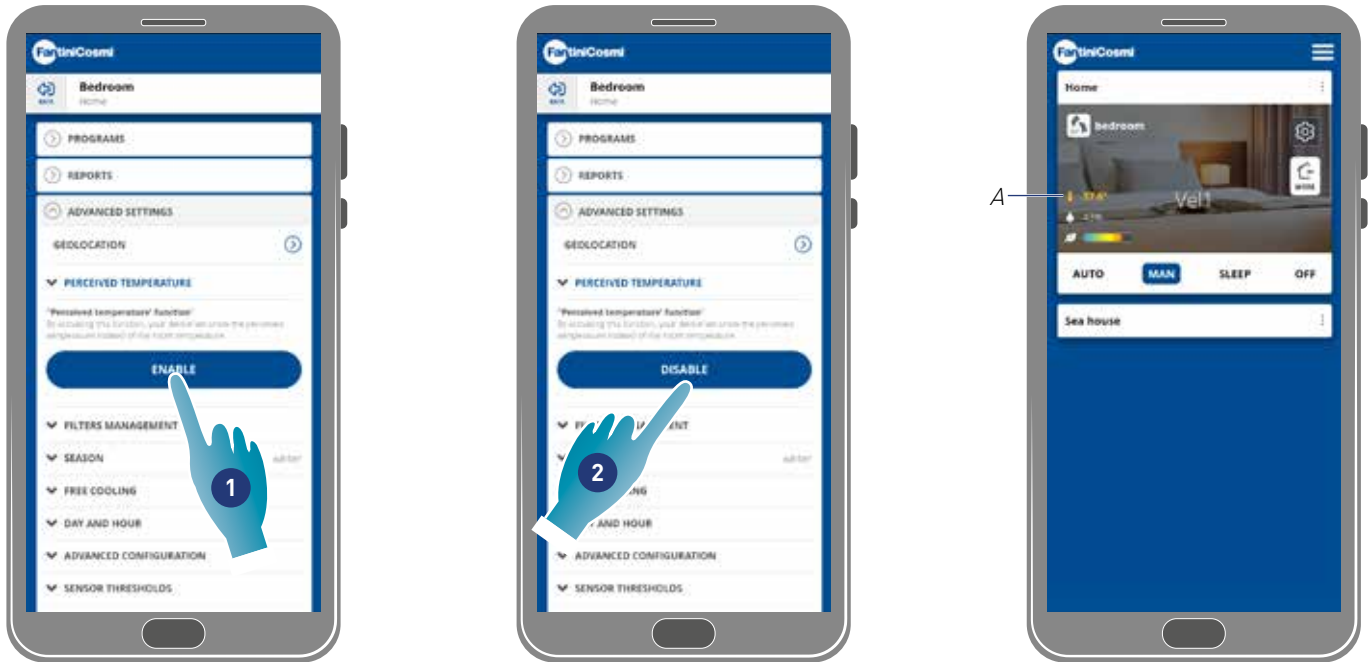
11. Touch to disable if necessary

Back

4.3.3.2. Perceived temperature

The perceived temperature can be set in place of the measured temperature in this section.

To obtain the **perceived temperature**, the measured room temperature, **is also affected by the measured relative humidity**.



1. Touch to activate the perceived temperature.
Now the system will display the perceived temperature
2. Touch to disable it if necessary

When the perceived temperature is active, the value is coloured yellow (A) on the home page

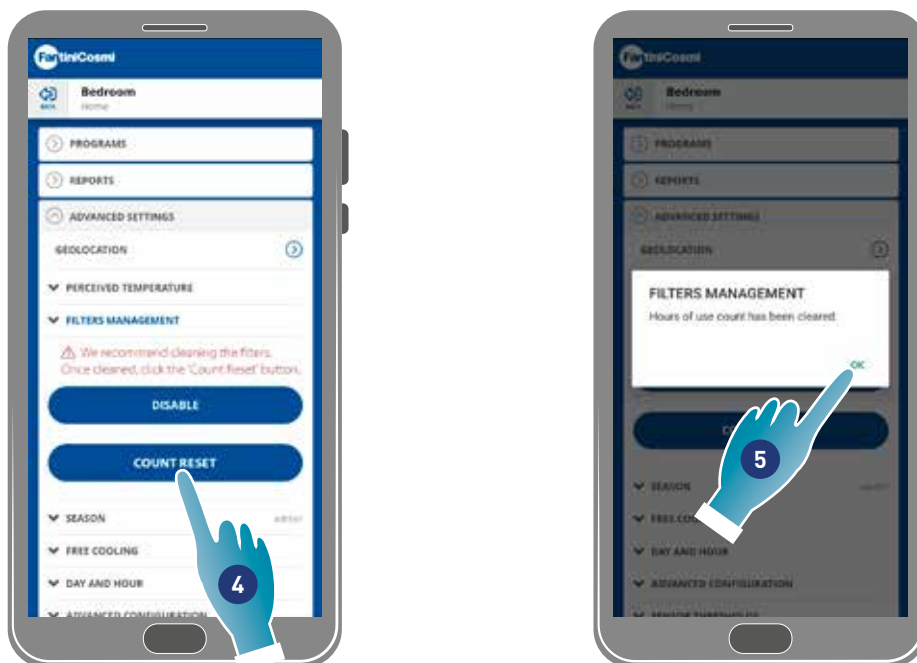
4.3.3.3. Filter management

Note: this function cannot be used in BLE mode.



1. Touch to enable the function
2. Touch to continue
3. After enabling the function, the system will display a warning when the filters need to be cleaned ()

Back



4. After cleaning, you need to reset the count
5. Touch to finish

Filter cleaning: after stopping the power supply circuit, remove the cartridge. Clean the filter by immersing it in cold water.

Plastic parts cleaning: After stopping the power supply circuit, clean dirty parts with water and some detergent using the utmost care.

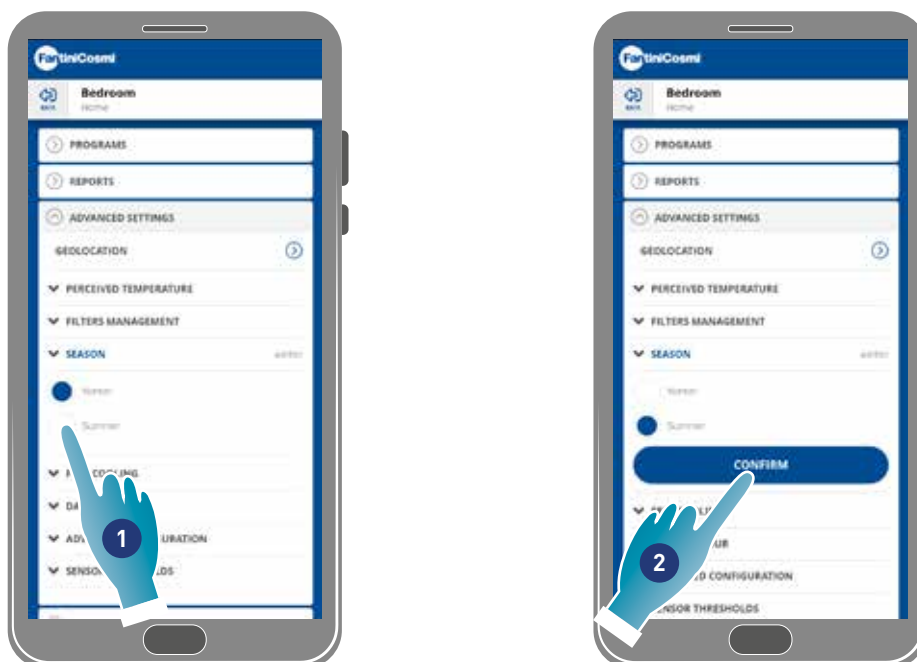
Attention: do not immerse the electrical parts in water or other liquids

4.3.3.4. Season

The current season can be selected in this section, this will affect some functions:

winter – by setting this season, the parameters to determine the Perceived temperature function will vary;

summer – by setting this season, the parameters to determine the Perceived temperature function will vary and the Free cooling function will be enabled.

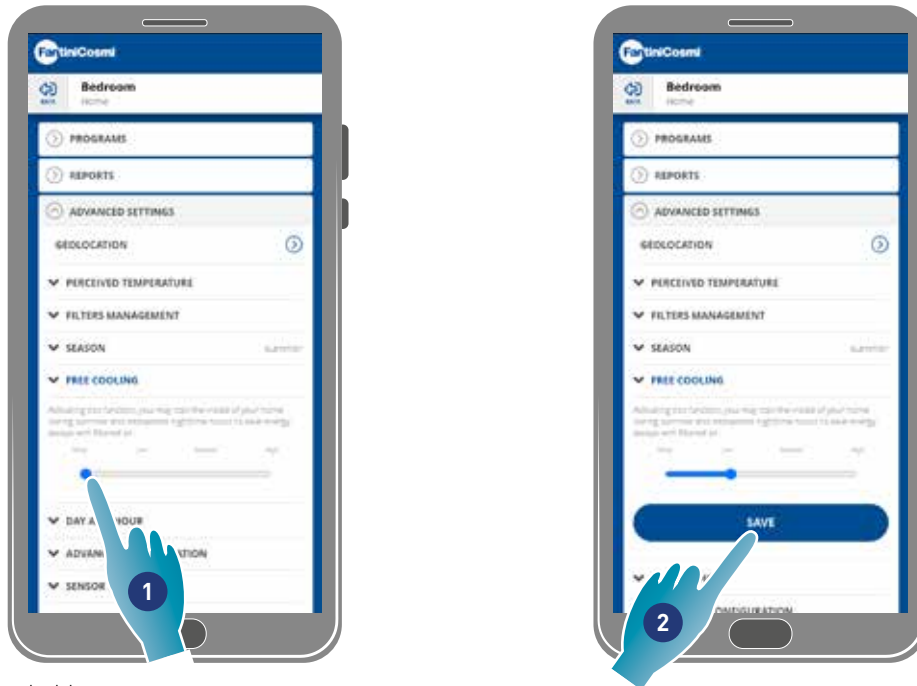


1. Touch to select a mode
2. Touch to confirm

Back

4.3.3.5. Free cooling

The triggering threshold of the Free cooling function can be set in this section. Activating this function, you may cool the inside of your home during summer and midseason nighttime hours to save energy, always with filtered air. This function is active in the **Summer season mode** only



1. Touch to select a threshold
2. Touch to save the setting

Free cooling thresholds

low 2 °C	medium 4 °C	high 6 °C
-------------	----------------	--------------

4.3.3.6. Day and time

The current day and time can be set in this section

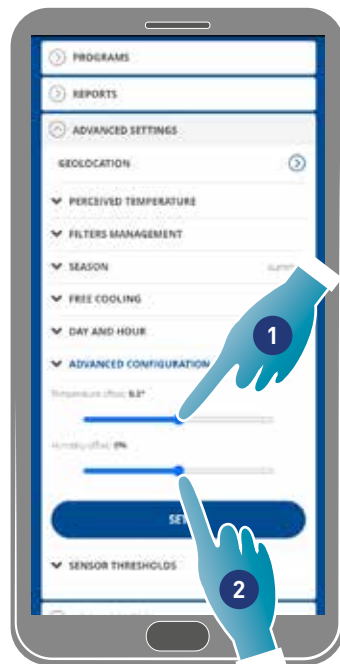


1. Touch to set date and time
2. Scroll to select date and time
3. Touch to confirm
4. Touch to enable automatic update to daylight saving time
5. Touch to confirm

Back

4.3.3.7. Offset configuration

A reading offset with respect to the actual parameters read by the device (temperature and humidity) can be set in this section. Use this function if the device is positioned in such a way that the reading is affected by other factors (e.g. proximity to a window or heat source).



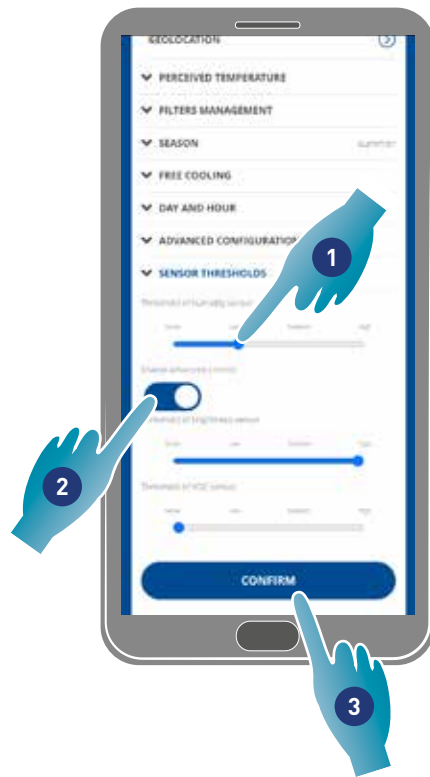
1. Scroll to set the offset value, the available values are:
Settable temperature OFFSET from -5 °C to +5 °C, resolution 0.1 °C;
settable humidity OFFSET from -5 % to +5 %, resolution 0.1 %
2. Touch to confirm

Back

4.3.3.8.Sensor thresholds

The **sensitivity thresholds for the brightness, humidity and VOC sensors** can be set in this section. This setting, determined by the device operating in automatic mode, triggers a forced air exchange at maximum speed (boost) if said thresholds are exceeded.

By enabling advanced control, the set speed is increased by one step if these set limits (humidity and VOC) are exceeded.



1. Scroll to set the threshold value (none, low, medium, high)
2. Touch to enable advanced control
3. Touch to confirm

Sensor relative humidity thresholds

low	medium	high
55%	60%	65%

VOC sensor thresholds

low	medium	high
250ppm	300ppm	350ppm

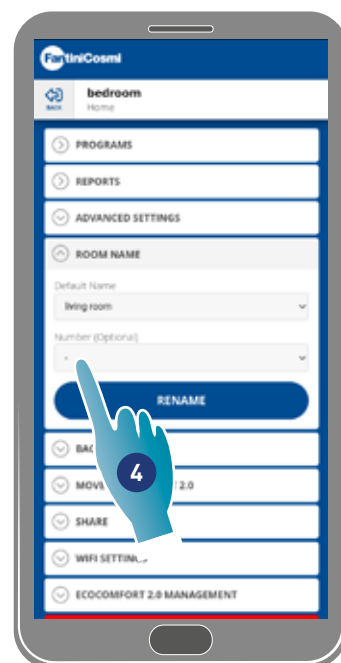
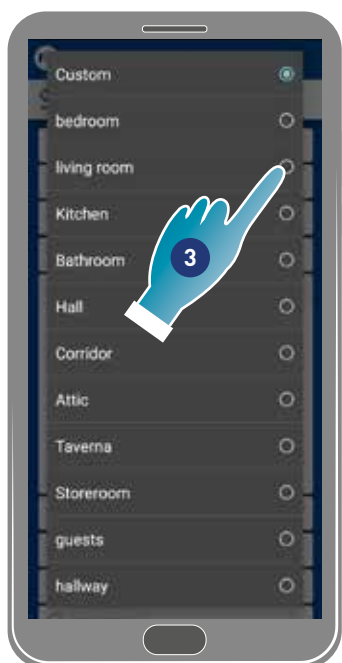
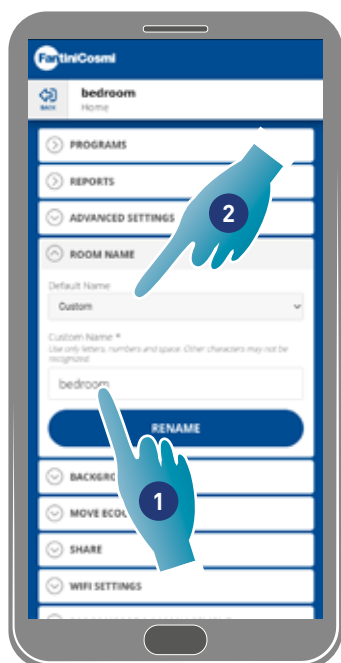
Sensor brightness thresholds

low	medium	high
0.1	0.125	0.150

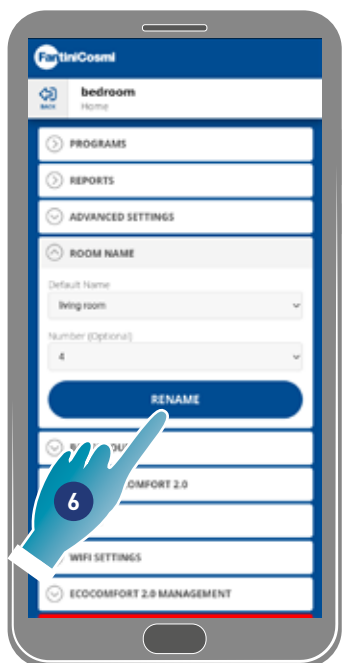
Back

4.3.5. Room name

A name for the zone among those proposed can be selected or a custom one created in this section.



1. Enter a custom name or
2. Touch to select a standard name
3. Select a standard name
4. Touch to set the number of rooms (optional)



5. Select a room number
6. Touch to confirm
7. Touch to continue

Back

4.3.6. Wallpaper

A wallpaper for the area can be set in this section by selecting it from those available, taking a photo or importing it from a Smartphone.

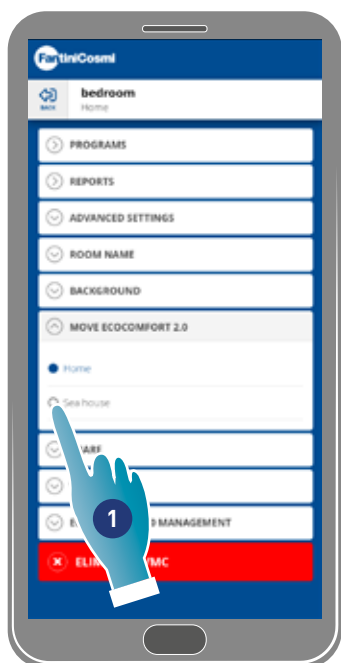


1. Select the wallpaper from those available in the App or
2. Take a photo or
3. Upload the photo from the Smartphone folders

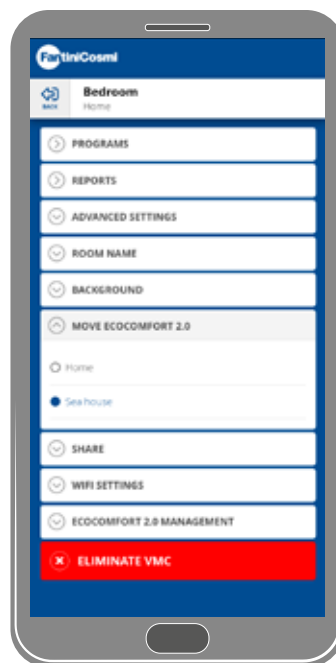
Back

4.3.7. Moving Ecocomfort 2.0 Smart

The device can be moved to another home in this section



1. Select the home to move the device to
2. Touch to confirm



3. Touch to continue

Back

4.3.8. Sharing

Note: this function cannot be used in BLE mode


In this section, you can:

- view the users who may run the device;
- share device management with another user;
- transfer ownership to another user;
- remove them from management.

4.3.8.1. Inviting another user

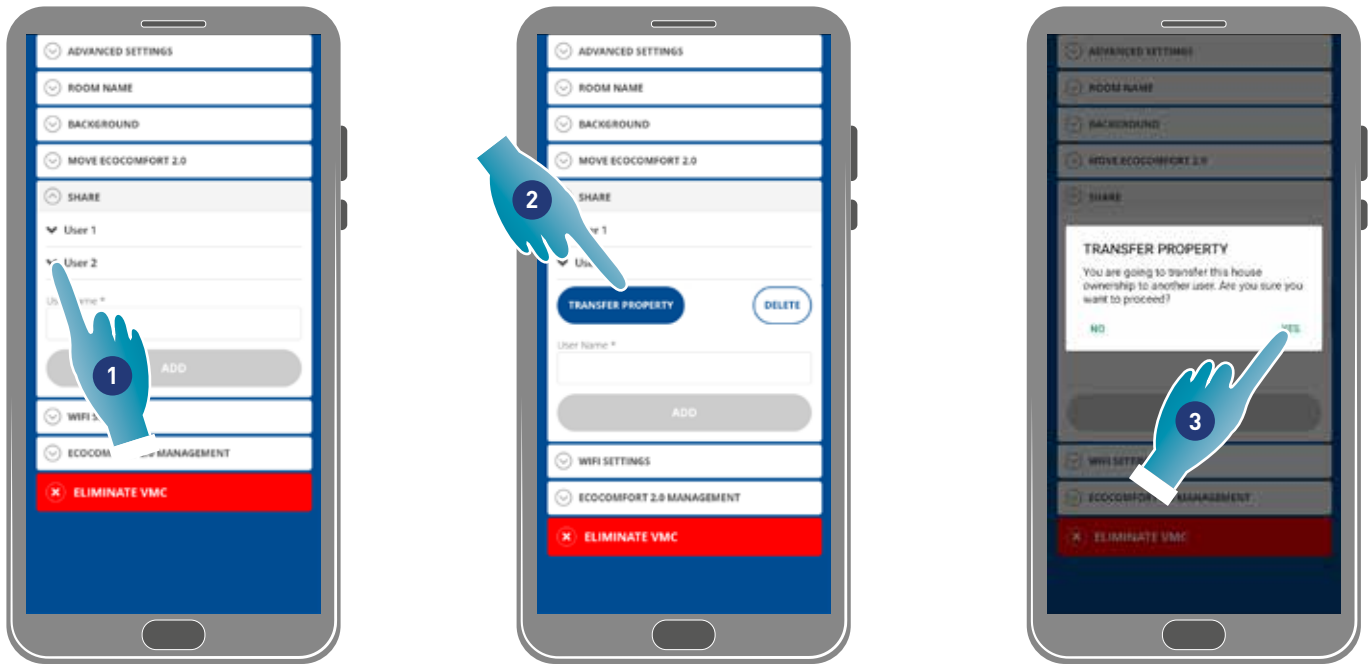


1. Enter the name of the user you want to share device management with
2. Touch to add

The user will now appear in the list of users authorised to manage, and a yellow icon will be displayed on the home page on his/her smartphone .

Back

4.3.8.2. Transferring ownership



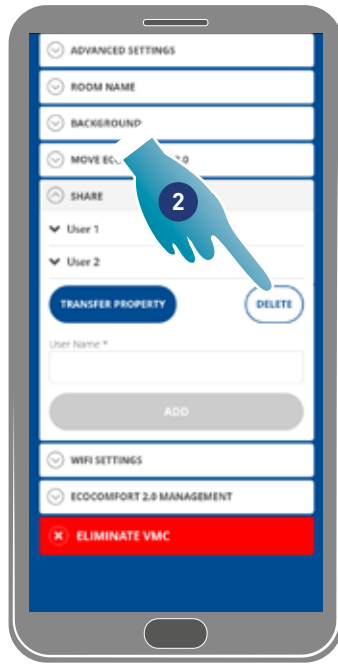
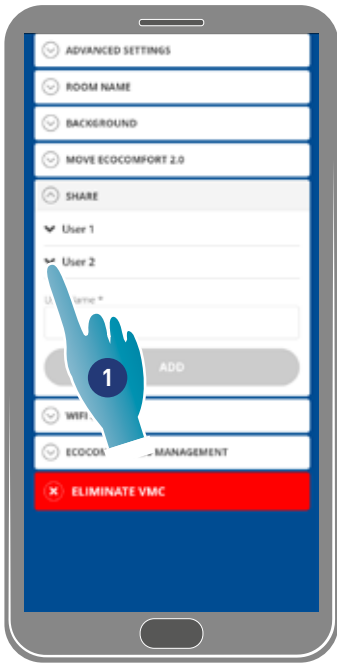
1. Touch to manage a user
2. Touch to transfer ownership to another user
3. Touch to confirm



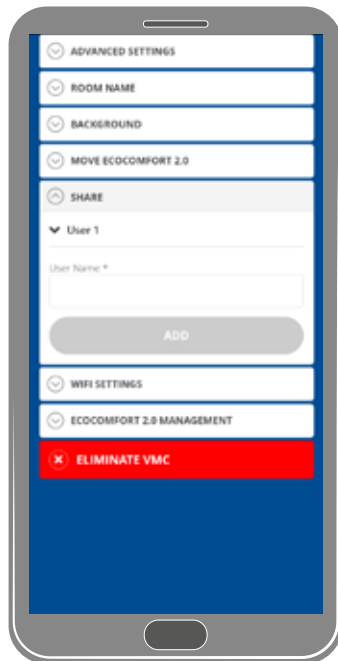
The user will need to restart the application for the change to take effect.
 Now the user who transferred ownership has become a guest and a yellow icon [A] will appear on the home page

Back

4.3.8.3. Removing user from management



1. Touch to manage a user
2. Touch to remove them from management
3. Touch to confirm



The user has now been removed from management.

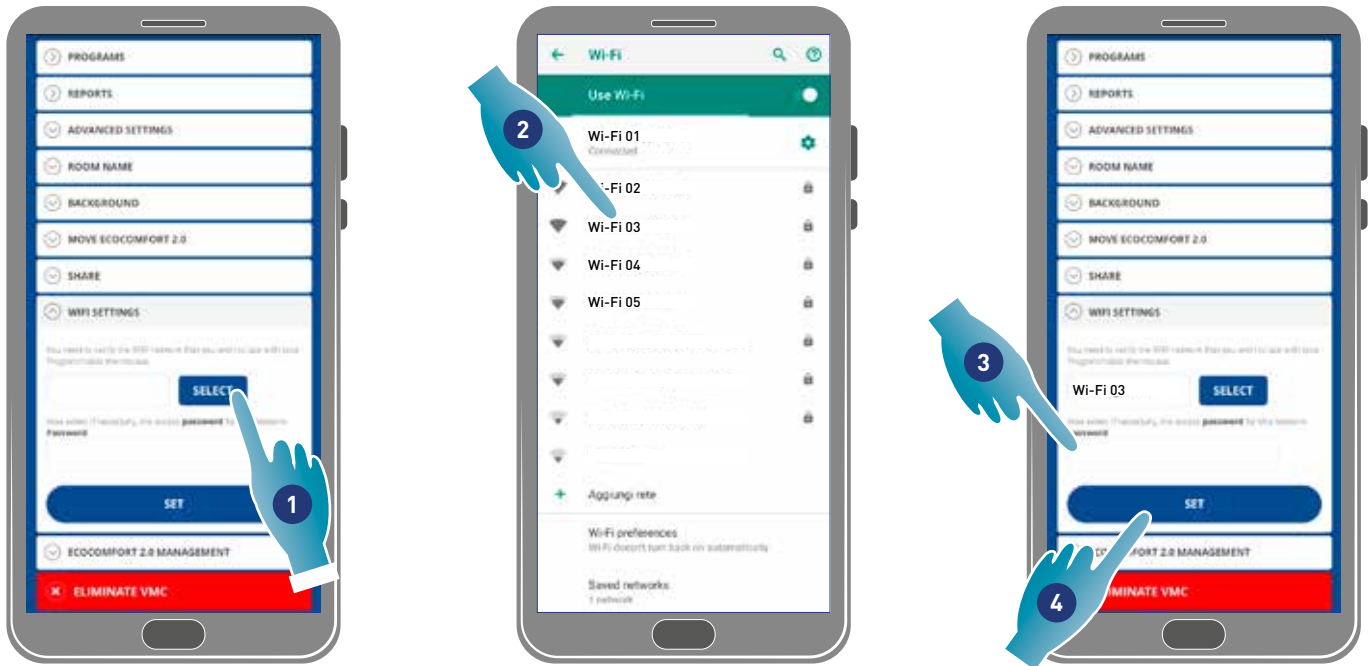
Note: this operation will not remove the user's account

Back

4.3.9. Wi-Fi setting

The Wi-Fi network to which the device is connected can be edited in this section.

Note: this function cannot be used in BLE mode



1. Touch to select the Wi-Fi [2,4 GHz (802.11 b/g/n)] network
2. Select a network
3. Enter the password
4. Touch to confirm

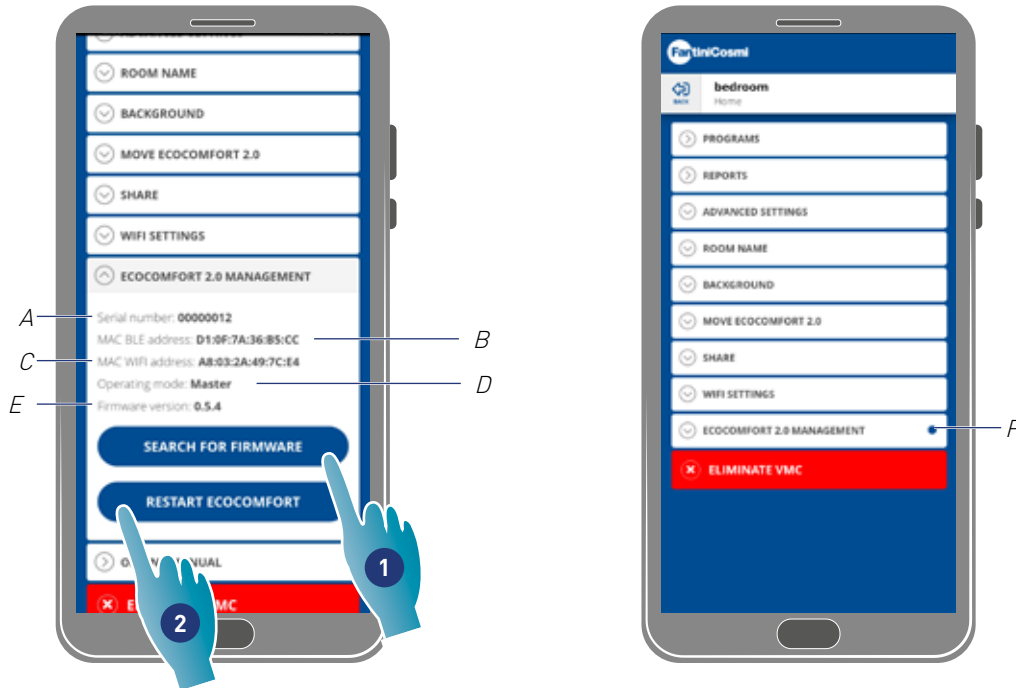
Back

4.3.10. Managing Ecocomfort 2.0 Smart (updating firmware)

In this section you can view some device data, update the firmware and restart the VMC.

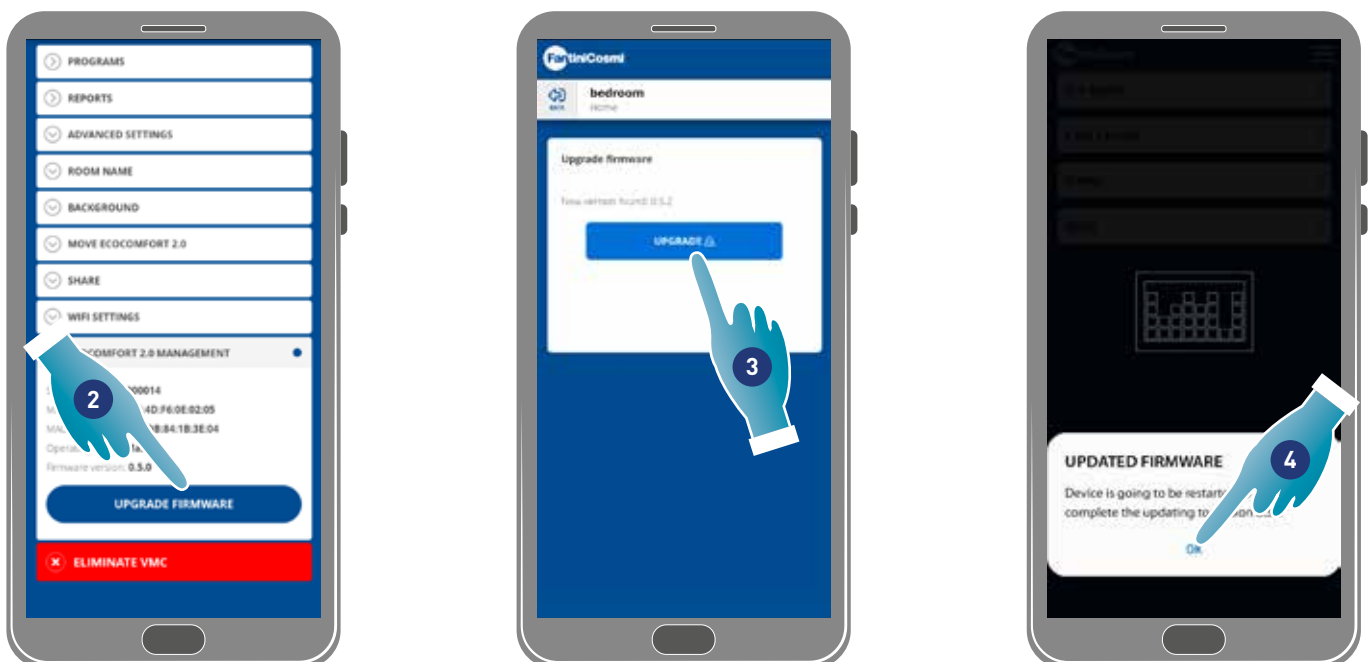
Note: to perform the firmware update and restart the VMC the smartphone must be:

- connected to a Wi-Fi network;
- with active BLE;
- located close to the device.



- A Serial number
- B Mac BLE address
- C Mac WIFI address
- D Operating mode [Master/slave]
- E Firmware version

1. Touch to check for new firmware or to get a notification on your Smartphone and one in the settings menu (F) when new firmware is available
2. Tap to restart your device

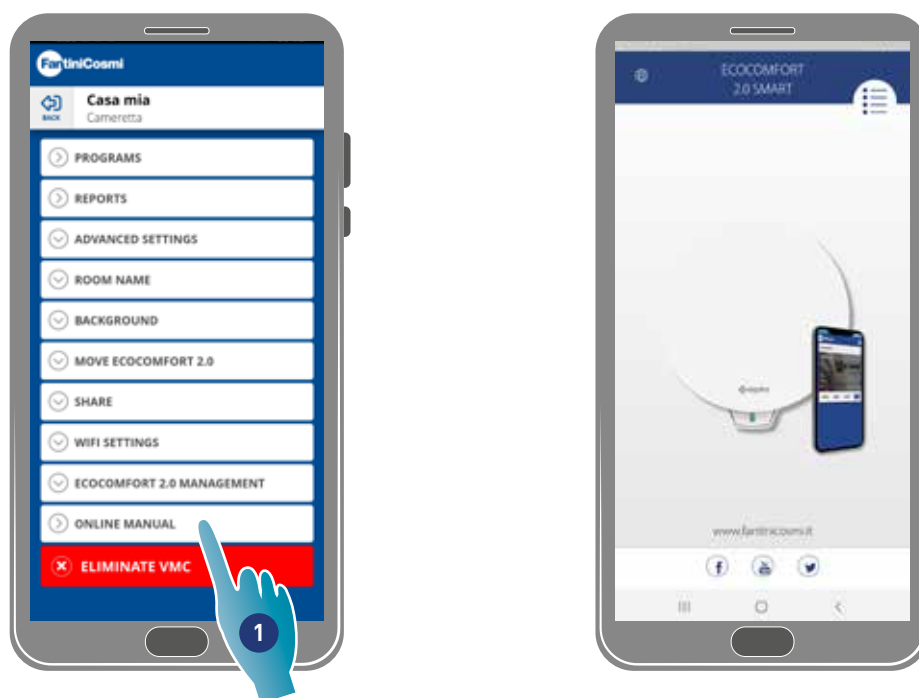


2. Touch to start the update procedure
3. Touch to continue
4. Touch to finish

Back

4.3.11. Online Manual

This feature allows you to view the VMC manual

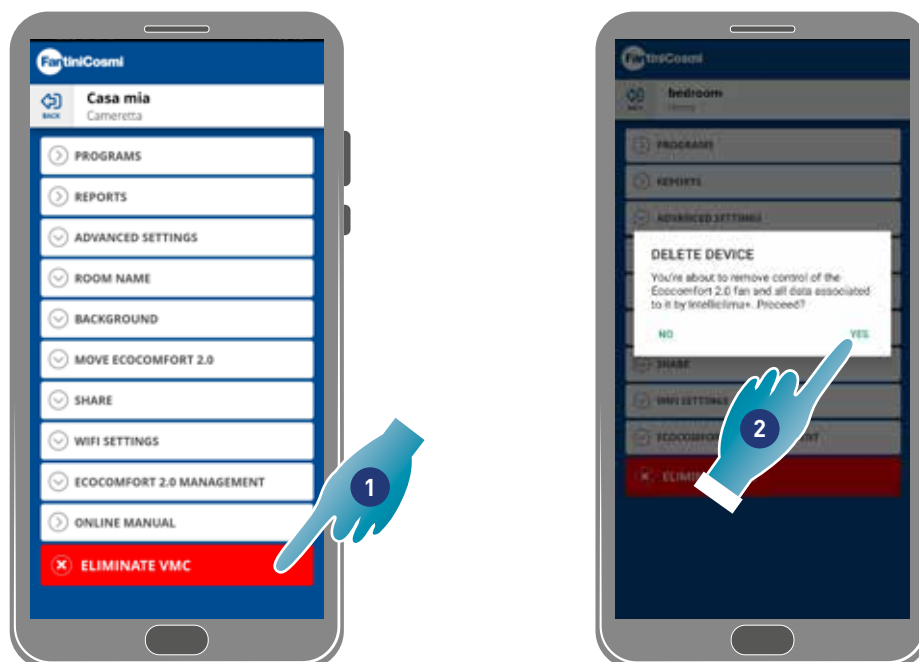


1. Tap to view the manual

4.3.12. Removing device

Use this function to unpair the device from the home it is paired with.

Note: To unpair a Master type device, first unpair the Slave units it is associated with



1. Touch to unpair the device

Attention: If the device is removed, all data will be lost.

2. Touch to confirm

At the end of the operation, to go back to managing the device, it is necessary to pair it again

Back

FANTINI COSMI SPA www.fantinosmi.it

Via dell'Osio, 6 - 20049 Caleppio di Settala MI, Italy
Ph. +39 02 956821 | Fax +39 02 95307006 | info@fantinosmi.it

TECHNICAL SUPPORT
Tel. +39 02 95682278 | supportotecnico@aspira.it

EXPORT DEPARTMENT
Ph +39 02 95682229 | export@fantinosmi.it