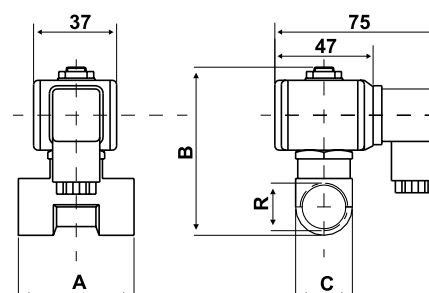


# M20

## Direct operation solenoid valve bodies, normally-closed

Solenoid valves suitable for water, air, fuel-oil, inert gases and other fluids non-corrosive for copper alloys, with viscosity up to 2° Engler.



Dimensions (mm)

type	A	B	C
M20B3	40	74	17
M20C5	53	78.5	26
M20D5	53	78.5	26
M20E7	60	94	52

N.B. Dimensions and weights are including the coils.

	Passage orifice diameter	Closing time	Female connection	Kv	Maximum differential pressure		Testing pressure (DIN2401) PN
					VN	0,85VN	
M20B3	3 mm	10 msec	G 1/4	0.27 m <sup>3</sup> /h	16	10	25 bar
M20C5	5 mm	10 msec	G 3/8	0.612 m <sup>3</sup> /h	6	2	25 bar
M20D5	5 mm	10 msec	G 1/2	0.612 m <sup>3</sup> /h	5	2	25 bar
M20E7	7 mm	10 msec	G 3/4	1 m <sup>3</sup> /h	2.5	1.8	25 bar

Kv = water flow in m<sup>3</sup>/h with pressure drop of 1 bar (1 bar = 100kPa).

	Control coil included 24V	Connector	Passage orifice mm	Female connection
M20C51	IM22	1578501	5	G 3/8

## INSTALLATION

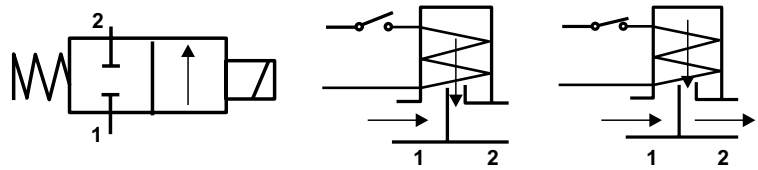
Female threaded connection from G 1/4 to G 3/4.  
Quick connection connector for the coils.

## OPERATION

2-way execution, normally-closed.

Direct action operation.

When the coil is energized, the shutter opens instantly letting the fluid to pass as shown in the figure.



## FEATURES

Minimum operating limit  $-15\%V_n$ .

Maximum operating limit  $+10\%V_n$ .

Closing time 10 msec.

Brass-forged valve body.

Internal parts in stainless steel (17% CR).

Gaskets in VITON (fluoroelastomer).

Temperature of the controlled fluid:  $-10 \div +140^\circ\text{C}$ .

Testing pressure PN (DIN 2401) 25 bar.

With coil in d.c. the indicated pressure should be reduced by 60%.

Unit weights:

- M20B3 0.34 Kg
- M20C5 0.40 Kg
- M20D5 0.36 Kg
- M20E7 0.70 Kg

### ELECTROMAGNETS

The control coils are supplied separately from valve bodies.

See page IM2, series tensions, technical specifications and the codes for ordering.

## ACCESSORIES



IM21D

Control coil 12Vac 50/60Hz

IM21F

Control coil 24Vac 50/60Hz

IM21H

Control coil 110Vac 50/60Hz

IM21M

Control coil 230Vac 50/60Hz

IM22

Control coil 24Vdc

(with coil in d.c. the indicated pressure should be reduced by 60%)

IM22A

Control coil 12Vdc

(with coil in d.c. the indicated pressure should be reduced by 60%)



1578501

Quick connection connector DIN 43650, suitable for all IM2 coils.

Cable gland Pg9 (cable diameter 6÷8 mm).

Pg11 cable gland thread;

Adjustable cable outlet in 4 positions every 90°.