

# Fan



Mixed flow impeller with higher pressure

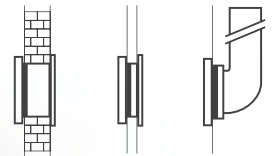


One code fits 4 diameters



80 90 100 120

Suitable for a wide range of applications



Available with timer and humidity control



# ASPIRANTE

the multipurpose fan



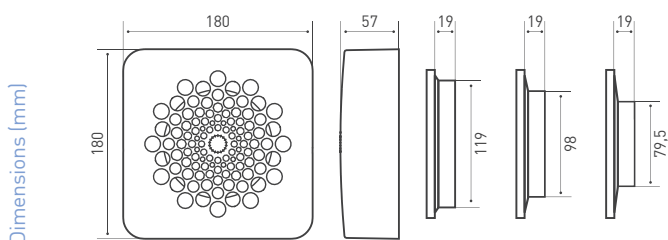
# ASPIRANTE



## the multipurpose fan

- Aspirante's modern and unique design makes it suitable for any environment. For intermittent or continuous ventilation of bathrooms, kitchens or utility rooms of both domestic and commercial premises.
- Aspirante is suitable to extract the air directly outside, into ducts.
- The possibility of using it for window installation by mean of a special kit (Aspirkit Vetro) makes Aspirante suitable for a wider range of applications.
- The reduced spigot makes it suitable for every wall installations even with a duct bend very close to fan outlet.
- Made of shockproof and anti-UV ABS plastic.
- Induction motor with thermal cut out - insulation class F
- Timer version: overrun timer settable from 45 sec. to 20 minutes
- HT version: Humidity sensor settable between 40% and 80% rh.



CE  IPX4 230V~50 Hz



CODE	MODEL			∅	m <sup>3</sup> /h	mmH <sub>2</sub> O	W	dB(A) 3mt
AP3100	ASPIRANTE			80 mm / 3"	55	8,8	23	41,5
				100 mm / 4"	100	8,8	23	43
				120 mm / 5"	130	9	24	43
AP3102	ASPIRANTE T	•		80 mm / 3"	55	8,8	23	41,5
				100 mm / 4"	100	8,8	23	43
				120 mm / 5"	130	9	24	43
AP3104	ASPIRANTE HT	•	•	80 mm / 3"	55	8,8	23	41,5
				100 mm / 4"	100	8,8	23	43
				120 mm / 5"	130	9	24	43
AP0902	ADAPTER			90 mm / 3,5"	90	8,5	23	43
AP0900	ASPIRKIT VETRO N	Kit for window application						
AP0904	ASPIRTIMER N	For ASPIRANTE AP3100						